

EXPOSURE DRAFT

ED XX/16
(July 2016)

Proposed Standard on Assurance Engagements ASAE 3100 *Compliance Engagements*

Issued for Comment by the **Auditing and Assurance Standards Board**

Draft

DISCLAIMER

This document contains draft proposals to be considered at a meeting of the AUASB, and does not necessarily reflect the final decisions and/or proposals to be contained in a published Exposure Draft or Auditing Standard. No responsibility is taken by the AUASB for the results of reliance, actions or omissions to act on the basis of any information contained in this document (including appendices), or for any errors or omissions in it.



Australian Government
Auditing and Assurance Standards Board

Commenting on this Exposure Draft

Comments on this Exposure Draft should be received by no later than 30 September 2016. Comments should be addressed to:

The Chairman
Auditing and Assurance Standards Board
PO Box 204, Collins Street West
Melbourne Victoria 8007 AUSTRALIA

[mailto:](#) Formal Submissions

Submissions should be lodged online via the 'Work in Progress-Open for Comment' page of the AUASB website (www.auasb.gov.au/Work-In-Progress/Open-for-Comment.aspx) as a PDF document and Word document.

A copy of all non-confidential submissions will be placed on public record on the Auditing and Assurance Standards Board (AUASB) website: www.auasb.gov.au

Obtaining a Copy of this Exposure Draft

This Exposure Draft is available on the AUASB website: www.auasb.gov.au

Contact Details

Auditing and Assurance Standards Board
Podium Level
Level 14, 530 Collins Street
Melbourne Victoria 3000
AUSTRALIA

Phone: (03) 8080 7400
E-mail: enquiries@auasb.gov.au

Postal Address:
PO Box 204, Collins Street West
Melbourne Victoria 8007
AUSTRALIA

COPYRIGHT

© 2016 Auditing and Assurance Standards Board (AUASB). The text, graphics and layout of this Exposure Draft are protected by Australian copyright law and the comparable law of other countries. Reproduction within Australia in unaltered form (retaining this notice) is permitted for personal and non-commercial use subject to the inclusion of an acknowledgment of the source as being the AUASB.

Requests and enquiries concerning reproduction and rights for commercial purposes should be addressed to the Chairman, Auditing and Assurance Standards Board, PO Box 204, Collins Street West, Melbourne, Victoria 8007 or sent to enquiries@auasb.gov.au. Otherwise, no part of this Exposure Draft may be reproduced, stored or transmitted in any form or by any means without the prior written permission of the AUASB except as permitted by law.

ISSN 1030-603X

CONTENTS

PREFACE

AUTHORITY STATEMENT

CONFORMITY WITH INTERNATIONAL STANDARDS ON ASSURANCE ENGAGEMENTS

	<i>Paragraphs</i>
Application	1
Operative Date	2
Introduction	
Scope of this Standard on Assurance Engagements.....	3-14
Objectives	15-16
Definitions	17
Requirements	
Applicability of ASAE 3000.....	18
Ethical Requirements.....	19
Acceptance and Continuance.....	20-27
Quality Control.....	28
Professional Scepticism, Professional Judgement and Assurance Skills and Techniques.....	29
Planning and Performing the Engagement.....	30-1
Obtaining Evidence.....	38-46
Work Performed by an Assurance Practitioner’s Expert.....	47
Work Performed by Another Assurance Practitioner or a Responsible Party’s or Evaluator’s Expert.....	48
Evaluation of Evidence and Communication of Non-Compliance.....	49-52
Written Representations.....	53
Subsequent Events.....	54
Forming the Assurance Conclusion.....	55-56
Preparing the Assurance Report.....	57-63
Other Communication Responsibilities.....	64-67
Documentation.....	68-69
Application and Other Explanatory Material	
Application.....	A1
Introduction.....	A2-A5
Ethical Requirements.....	A6
Acceptance and Continuance.....	A7-A21
Planning and Performing the Engagement.....	A22-A36
Obtaining Evidence.....	A37-A39

Proposed Standard on Assurance Engagements ASAE 3100
Compliance Engagements

Work Performed by an Assurance Practitioner’s Expert.....A40

Work Performed by Another Assurance Practitioner or a Responsible Party’s or
Evaluator’s Expert A41-A43

Evaluation of Evidence and Communication of Non-Compliance A44-A45

Written Representations A46-A47

Subsequent Events..... A48-A49

Preparing the Assurance Report A50-A61

Other Communication Responsibilities..... A62-A63

Documentation A64

Appendix 1: Roles and Responsibilities – Direct and Attestation Compliance Engagements

Appendix 2: Terminology Table – ASAE 3000 and ASAE 3100

Appendix 3: [Example](#): Nature of Assurance Engagements on Compliance

Appendix 4: Standards Applicable to [Example](#) Engagements on Compliance

Appendix 5: Example Engagement Letters

Appendix 6: Example Assurance Reports on Compliance

Appendix 7: Example Modified Assurance Reports on Compliance

Draft

PREFACE

Reasons for Issuing ED XX/16

The AUASB issues exposure draft ED XX/16 of proposed Standard on Assurance Engagements ASAE 3100 *Compliance Engagements* pursuant to the requirements of the legislative provisions explained below.

The AUASB is an independent statutory committee of the Australian Government established under section 227A of the *Australian Securities and Investments Commission Act 2001*, as amended (ASIC Act). Under section 227B of the ASIC Act, the AUASB may formulate assurance standards for other purposes.

Main Proposals

This proposed Standard on Assurance Engagements establishes requirements and provides application and other explanatory material regarding the conduct of and reporting on assurance engagements on compliance. The standard replaces Standard on Assurance Engagements ASAE 3100 *Compliance Engagements*, issued by the AUASB in July 2008 and last revised in October 2008.

This proposed Standard on Assurance Engagements facilitates conformity with current AUASB Standards and revised ASAE 3000 *Assurance Engagements Other than Audits or Reviews of Historical Financial Information* issued in June 2014. The standard reflects best practice in compliance engagements and clarifies how to scope, conduct and report on an assurance engagement on compliance, to ensure that assurance engagement quality is maintained and where necessary improved.

Proposed Operative Date

It is intended that this proposed Standard on Assurance Engagements will be operative for assurance engagements commencing on or after -with early adoption permitted.

Request for Comments

Comments are invited on this Exposure Draft of the proposed re-issuance of ASAE 3100 *Compliance Engagements* by no later than 30 September 2016. The AUASB is seeking comments from respondents on the following questions:

1. Have applicable laws and regulations been appropriately addressed in the proposed standard?
2. Are there any references to relevant laws or regulations that have been omitted?
3. Are there any laws or regulations that may, or do, prevent or impede the application of the proposed standard, or may conflict with the proposed standard?
4. Are the considerations for conducting a direct engagement adequately differentiated from an attestation engagement?
5. Are the procedures required for limited and reasonable assurance appropriate and adequately distinguished?
6. What, if any, are the additional significant costs to/benefits for assurance practitioners and the business community arising from compliance with the requirements of this proposed standard? If there are significant costs, do these outweigh the benefits to the users of compliance engagements?
7. Are there any other significant public interest matters that constituents wish to raise?

Proposed Standard on Assurance Engagements ASAE 3100
Compliance Engagements

The AUASB prefers that respondents express a clear opinion on whether the proposed Standard on Assurance Engagements, as a whole, is supported and that this opinion be supplemented by detailed comments, whether supportive or critical, on the above matters. The AUASB regards both supportive and critical comments as essential to a balanced review of the proposed Standard on Assurance Engagements.

Draft

AUTHORITY STATEMENT

The Auditing and Assurance Standards Board (AUASB) formulates this Standard on Assurance Engagements ASAE 3100 *Compliance Engagements* pursuant to section 227B of the *Australian Securities and Investments Commission Act 2001*.

This Standard on Assurance Engagements is to be read in conjunction with ASA 100 *Preamble to AUASB Standards*, which sets out the intentions of the AUASB on how the AUASB Standards are to be understood, interpreted and applied and ASAE 3000 *Assurance Engagements Other than Audits or Reviews of Historical Financial Information*, which provides the overarching requirements for all assurance engagements other than those engagements relating to historical financial information.

Draft

Proposed Standard on Assurance Engagements ASAE 3100
Compliance Engagements

Conformity with International Standards on Assurance Engagements

This Standard on Assurance Engagements ASAE 3100 *Compliance Engagements* has been formulated for Australian public interest purposes and there is no equivalent International Standard on Assurance Engagements (ISAE), issued by the International Auditing and Assurance Standards Board (IAASB), an independent standard-setting board of the International Federation of Accountants (IFAC).

This Standard does, however, reflect certain aspects of other Australian ASAEs, which reproduce substantial parts of the equivalent ISAEs issued by the IAASB and published by IFAC, including ISAE 3000 *Assurance Engagements Other than Audits or Reviews of Historical Financial Information*.

Draft

STANDARD ON ASSURANCE ENGAGEMENTS ASAE 3100

Compliance Engagements

Application

1. This Standard on Assurance Engagements applies to limited and reasonable assurance engagements to provide an assurance report on an entity's compliance with the compliance requirements as evaluated by the suitable criteria. (Ref: Para. A1)

Operative Date

2. This Standard on Assurance Engagements is operative for assurance engagements commencing on or after XX XXX, with early adoption permitted prior to this date.

Introduction

Scope of this Standard on Assurance Engagements

3. This Standard on Assurance Engagements (ASAE) deals with assurance engagements to provide an assurance report on whether the entity has complied in all material respects with the compliance requirements, throughout the specified period or as at a specified date, using the criteria.
4. This ASAE addresses assurance engagements on compliance: (Ref: Para. A2-A5)
 - (a) With the compliance requirements;
 - (b) Providing a limited or reasonable assurance conclusion;
 - (c) For either restricted use, by those charged with governance of the entity or specified third parties, or to be publicly available; and
 - (d) Either based on an attestation engagement or a direct engagement. (Ref: Para. 17(a), 17(h), A4).
5. Agreed-upon procedures engagements, where procedures are conducted and factual findings are reported but no conclusion is provided, and consulting engagements, for the purpose of providing advice, on compliance are not assurance engagements and are not dealt with in this ASAE. Agreed-upon procedures engagements are addressed under Standard on Related Services, ASRS 4400.¹

Nature of a Compliance Engagement

6. Compliance engagements are conducted in both the private and public sector, in either case the engaging party will usually be the entity responsible for meeting the compliance requirements which are subject to the compliance engagement. In these circumstances terms of engagement are agreed with the engaging party.
7. An entity may have an obligation to comply with externally and/or internally established compliance requirements. These compliance requirements may be established through law and regulation, contractual arrangements or internally established requirements, for example company policies. A table showing the nature of assurance engagements on compliance is contained in Appendix 3.

¹ See ASRS 4400 Agreed upon Procedures Engagements to Report Factual Findings.

Proposed Standard on Assurance Engagements ASAE 3100
Compliance Engagements

Relationship with ASAE 3000, Other Pronouncements and Other Requirements

8. The assurance practitioner is required to comply with ASAE 3000 *Assurance Engagements Other than Audits or Reviews of Historical Financial Information* (ASAE 3000) and this ASAE when performing compliance engagements. This ASAE supplements, but does not replace ASAE 3000, and expands on how ASAE 3000 is to be applied in a compliance engagement. This ASAE applies the requirements in ASAE 3000 to attestation engagements and adapts those requirements, as necessary, to direct engagements on compliance. ASAE 3000 includes requirements in relation to such topics as engagement acceptance, planning, obtaining evidence and documentation that apply to all assurance engagements, including engagements conducted in accordance with this ASAE. *Framework for Assurance Engagements*, which defines and describes the elements and objectives of an assurance engagement, provides the context for understanding this ASAE and ASAE 3000.
9. An assurance engagement performed in accordance with ASAE 3000 measures or evaluates the underlying subject matter against suitable criteria. In a compliance engagement the assurance practitioner determines whether compliance requirements have been met by evaluating the subject matter against the compliance requirements, using the criteria. The criteria may be the compliance requirements, or a subset thereof. A table explaining the terminology applied in this ASAE is contained in Appendix 2.
10. This ASAE requires the assurance practitioner to apply the ASAE 3000 requirement to comply with relevant ethical requirements related to assurance engagements. It also requires the lead assurance practitioner to be a member of a firm that applies ASQC 1 *Quality Control for Firms that Perform Audits and Reviews of Financial Reports and Other Financial Information, Other Financial Information, Other Assurance Engagements and Related Services Engagements*.
11. An assurance engagement performed under this ASAE may be part of a larger engagement. In such circumstances, this ASAE is relevant only to the portion of the engagement relating to assurance on compliance.
12. If multiple standards are applicable to the assurance engagement, the assurance practitioner applies, in addition to ASAE 3000, either:
 - (a) If the engagement can be separated into parts, the standard relevant to each part of the engagement, including this ASAE for the part on compliance; or
 - (b) If the engagement cannot be separated into parts, the standard which is most directly relevant to the subject matter.
13. Assurance conclusions on compliance may be required by Regulators, Government or other users in conjunction with assurance conclusions on financial reports, other historical financial information, and compliance with other requirements, controls and/or other subject matters. In these engagements the subject matter and criteria against which that subject matter is evaluated and the level of assurance sought may vary, in which case different standards will apply. Assurance reports can include separate sections for each subject matter, criteria or level of assurance in order that the different matters concluded upon are clearly differentiated.
14. A table showing the AUASB Standards to apply to compliance engagements depending on the subject matter and engagement circumstances is contained in Appendix 4. (Ref: Para. A1)

Objectives

15. In conducting a compliance engagement, the objectives of the assurance practitioner are:
 - (a) To obtain reasonable or limited assurance, about whether the entity has complied in all material respects, with compliance requirements as evaluated by the suitable criteria;

Proposed Standard on Assurance Engagements ASAE 3100
Compliance Engagements

- (b) To express a conclusion² through a written report on the matters in (a) above which expresses either a reasonable or limited assurance conclusion and describes the basis for the conclusion; and/or
 - (c) To communicate further as required by this ASAE and any other relevant ASAEs.
16. In conducting the assurance engagement, the objectives of the assurance practitioner under ASAE 3000³ include: “to obtain either reasonable or limited assurance, as appropriate, about whether the subject matter information is free from material misstatement”. The subject matter information in a compliance engagement is the outcome of the evaluation⁴ of compliance with the compliance requirements, as measured by the criteria. The evaluation is conducted:
- (a) In an attestation engagement, by the responsible party or evaluator, and presented in a Statement⁵, which addresses whether the compliance requirements have been met. The objective of the assurance practitioner is to obtain reasonable or limited assurance about whether the Statement is free from material misstatement, although the assurance practitioner’s conclusion may be expressed in terms of whether the compliance requirements have been met; or
 - (b) In a direct engagement, by the assurance practitioner and presented in the assurance conclusion, therefore, no Statement is prepared by the responsible party. The objective of the assurance practitioner is to obtain reasonable or limited assurance about whether the compliance requirements have been met.

Definitions

17. For the purposes of this Standard on Assurance Engagements, the following terms have the meanings attributed below:
- (a) Attestation engagement on compliance—A reasonable or limited assurance engagement in which a party other than the assurance practitioner, being the responsible party or evaluator evaluates compliance with the compliance requirements. The outcome of that evaluation is provided in a Statement, which may either be available to the intended users or may be presented by the assurance practitioner in the assurance report. In an attestation engagement, the assurance practitioner’s conclusion addresses whether the Statement is free from material misstatement. The assurance practitioner’s conclusion may be phrased in terms of: (Ref: Para. 4(d), A4)
 - ~~(i) The compliance activity and the criteria and the compliance requirements;~~
 - ~~(i)(ii) The compliance outcome and the criteria; or~~
 - ~~(ii)(iii) A Statement made by the appropriate party.~~
 - ~~(b) Criteria—The benchmark, framework or legislation used to evaluate whether the compliance requirements have been met. The “applicable criteria” are the criteria used for the particular engagement. (23, A13, Appendix 1)~~
 - ~~(e)(b) Compliance aActivity (subject matter or underlying subject matter)—The activity that is undertaken to meet the compliance requirement(s).~~

² The term conclusion also extends to include an opinion expressed in a reasonable assurance engagement.
³ See ASAE 3000, paragraph 10.
⁴ The term evaluation includes the concept of measurement for quantification aspects of a compliance engagement.
⁵ See ASAE 3100, paragraph 176(z) for definition of the term Statement.

Proposed Standard on Assurance Engagements ASAE 3100
Compliance Engagements

- ~~(c)~~ (c) **Compliance engagement**—An assurance engagement in which an assurance practitioner expresses a conclusion after evaluating an entity’s compliance with the compliance requirements.
- ~~(d)~~ (d) **Compliance framework**—A framework adopted by the entity, which is designed to ensure that the entity achieves compliance, and includes governance structures, programs, processes, systems, controls and procedures.
- ~~(e)~~ (e) **Compliance outcome (subject matter information)**—The outcome of the evaluation of the underlying subject matter (compliance activity) against the compliance requirements, using the criteria. The compliance outcome is the Statement of the responsible party or evaluator in an attestation compliance engagement, or the assurance practitioner’s conclusion in a direct compliance engagement, providing the outcome of their evaluation.
- ~~(f)~~ (f) **Compliance requirement(s)**—The specific requirements established in law, regulations, other statutory requirements (e.g. ASIC Class Orders and Regulatory Guides and APRA Prudential Standards), contractual arrangements, ministerial directives, industry or professional obligations or internally via entity/company policies, procedures and frameworks. (Ref: Para. Appendix 1)
- ~~(h)~~ (h) **Compliance Outcome (subject matter information)**—The outcome of the evaluation of the underlying subject matter (compliance activity) against the compliance requirements, using the criteria. The compliance outcome is the Statement of the responsible party or evaluator in an attestation compliance engagement, or the assurance practitioner’s conclusion in a direct compliance engagement, providing the outcome of their evaluation.
- ~~(i)~~ (i) **Compliance Activity (subject matter or underlying subject matter)**—The activity that is undertaken to meet the compliance requirement(s).
- ~~(j)~~ (g) **Criteria**—The benchmark, framework or legislation used to evaluate whether the compliance requirements have been met. The “applicable criteria” are the criteria used for the particular engagement. (Ref: Para. 23, A13, Appendix 1)
- ~~(h)~~ (h) **Direct engagement on compliance**—A reasonable or limited assurance engagement in which the assurance practitioner evaluates the compliance activities against the compliance requirements. The compliance outcome of the assurance practitioner’s evaluation (the subject matter information) is expressed in the assurance practitioner’s conclusion.
- ~~(i)~~ (i) **Engaging party**—The party(ies) that engages the assurance practitioner to perform the assurance engagement.
- ~~(m)~~ (j) **Entity**—The legal entity, economic entity, or the identifiable portion of a legal or economic entity, or combination of legal or other entities or portions of those entities (for example, a joint venture) to which the compliance requirements relate.
- ~~(n)~~ (k) **Evaluator**—The party(ies) who evaluates the underlying subject matter (compliance activities) against the criteria. The evaluator possesses expertise in the underlying subject matter.
- ~~(o)~~ (l) **Firm**—A sole assurance practitioner, partnership or corporation or other entity of individual assurance practitioners. “Firm” should be read as referring to its public sector equivalents where relevant.
- ~~(p)~~ (m) **Intended users**—The individual(s) or organisation(s), or group(s) thereof that the assurance practitioner expects will use the assurance report. In some cases, there may be intended users other than those to whom the assurance report is addressed.

Proposed Standard on Assurance Engagements ASAE 3100
Compliance Engagements

~~(n)~~ Internal audit function—A function of an entity that performs assurance and consulting activities designed to evaluate and improve the effectiveness of the entity’s governance, risk management and internal control processes.

~~(o)~~ Limited assurance engagement—An assurance engagement in which the assurance practitioner reduces engagement risk to a level that is acceptable in the circumstances of the engagement, but where that risk is greater than for a reasonable assurance engagement, as the basis for expressing a conclusion in a form that conveys whether, based on the procedures performed and evidence obtained, a matter(s) has come to the assurance practitioner’s attention to cause the assurance practitioner to believe the compliance requirements have not been met, in all material respects. The nature, timing and extent of procedures performed in a limited assurance engagement is limited compared with that necessary in a reasonable assurance engagement but is planned to obtain a level of assurance that is, in the assurance practitioner’s professional judgement, meaningful. To be meaningful, the level of assurance obtained by the assurance practitioner is likely to enhance the intended users’ confidence about the compliance outcome to a degree that is clearly more than inconsequential.

~~(p)~~ Long-form report—Assurance report including other information and explanations that are intended to meet the information needs of users but not to affect the assurance practitioner’s conclusion. In addition to the matters required to be contained in the assurance practitioner’s report, as set out in paragraph ~~586~~, long-form reports may describe in detail matters such as:

- (i) the terms of the engagement;
- (ii) the criteria being used and the specific compliance activities designed to meet each compliance requirement;
- (iii) descriptions of the tests that were performed;
- (iv) findings relating to the tests that were performed or particular aspects of the engagement;
- (v) details of the qualifications and experience of the assurance practitioner and others involved with the engagement;
- (vi) disclosure of materiality levels; or
- (vii) recommendations.

The assurance practitioner may find it helpful to consider the significance of providing such information to meet the needs of the intended users. As required by paragraph ~~60~~, additional information is clearly separated from the assurance practitioner’s conclusion and worded in such a manner as to make it clear that it is not intended to alter or detract from that conclusion.

~~(q)~~ Material in the context of a compliance engagement—

- (i) in relation to potential (for risk assessment purposes) or detected (for evaluation purposes) non-compliance – instance(s) of non-compliance that are significant, individually or collectively, in the context of the entity’s compliance with compliance requirements, and that affect the assurance practitioner’s conclusion; and/or
- (ii) in relation to the compliance framework and controls – instance(s) of deficiency that are significant in the context of the entity’s control

Proposed Standard on Assurance Engagements ASAE 3100
Compliance Engagements

environment and that may raise the compliance engagement risk sufficiently to affect the assurance practitioner's conclusion.

- ~~(tt)~~(r) Misstatement—For attestation engagements on compliance, a difference between the compliance outcome and the evaluation of the compliance activity against the compliance requirements. Misstatements can be intentional or unintentional, qualitative or quantitative, and include omissions.
- ~~(vv)~~(s) Non-compliance—For both attestation and direct engagements on compliance, a failure to meet a compliance requirement in whole or in part.
- ~~(ww)~~(t) Professional judgement—The application of relevant training, knowledge and experience, within the context provided by assurance and ethical standards, in making informed decisions about the courses of action that are appropriate in the circumstances of the engagement.
- ~~(xx)~~(u) Professional scepticism—An attitude that includes a questioning mind, being alert to conditions which may indicate possible misstatement, and a critical assessment of evidence.
- ~~(yy)~~(v) Reasonable assurance engagement—An assurance engagement in which the assurance practitioner reduces engagement risk to an acceptably low level in the circumstances of the engagement as the basis for the assurance practitioner's conclusion. The assurance practitioner's conclusion is expressed in a form that conveys the assurance practitioner's opinion on the outcome of the evaluation of the compliance activities against compliance requirements.
- ~~(zz)~~(w) Representation—Statement by the responsible party, either oral or written, provided to the assurance practitioner to confirm certain matters or to support other evidence. A representation is additional to but may be provided in combination with the responsible party's or evaluator's Statement provided in an attestation engagement, as set out in paragraph 16(a).
- ~~(aa)~~(x) Responsible party—The party(ies) responsible for the underlying subject matter, being the compliance activity(ies) in a compliance engagement.
- ~~(bb)~~(y) Short-form report—Assurance report including only the matters required under paragraph ~~5860~~ of this ASAE.
- ~~(cc)~~(z) Statement—The outcome in writing of the responsible party or evaluator's evaluation of the compliance activities against the compliance requirements, provided to the assurance practitioner in an attestation engagement. A Statement is the subject matter information in an attestation engagement on compliance.

Requirements

Applicability of ASAE 3000

18. The assurance practitioner shall not represent compliance with this ASAE unless the assurance practitioner has complied with the requirements of this ASAE and ASAE 3000, adapted as necessary in the case of direct engagements. ASAE 3000 contains requirements and application and other explanatory material specific to attestation assurance engagements but it also applies to direct assurance engagements, adapted as necessary in the engagement circumstances.⁶ If this ASAE makes reference to a requirement in ASAE 3000, that requirement shall be applied to both attestation and direct engagements, unless specified otherwise. (Ref: Para. A1, Appendix 4)

⁶ See ASAE 3000, paragraph 2.

Proposed Standard on Assurance Engagements ASAE 3100
Compliance Engagements

Ethical Requirements

19. As required by ASAE 3000, the assurance practitioner shall comply with relevant ethical requirements related to assurance engagements.⁷ (Ref: Para. A6)

Acceptance and Continuance

Preconditions for the Assurance Engagement

20. The assurance practitioner shall accept or continue a compliance engagement only in the circumstances required by ASAE 3000, including that the preconditions for an assurance engagement are present, unless required to accept the engagement by law or regulation.

Appropriateness of the Subject Matter

21. When establishing whether the preconditions for an assurance engagement as required by ASAE 3000 are present, the assurance practitioner is required to assess the appropriateness of the subject matter.⁸ In doing so, the assurance practitioner shall determine whether the compliance activities which are to be evaluated are appropriate in addressing the needs of users, that is whether the performance of those activities determines whether the compliance requirements have been met. (Ref: Para. A9-A11)
22. If the subject matter is not appropriate, the assurance practitioner shall not accept the engagement or, if this is determined after accepting the engagement, either withdraw from the engagement or issue a modified conclusion.

Assessing the Suitability of the Criteria

23. When establishing whether the preconditions for an assurance engagement as required by ASAE 3000 are present, the assurance practitioner shall determine the suitability of the criteria expected to be applied, whether the criteria are provided by the engaging party, as in an attestation engagement, or are to be identified, selected or developed by the assurance practitioner, as in a direct engagement, including that they exhibit the characteristics set out in ASAE 3000.⁹ (Ref: Para. 17(g)~~17(b)+(+)~~, A12-A16).

Agreeing on the Terms of the Engagement

24. ASAE 3000¹⁰ requires the parties to the engagement to agree on the terms of the assurance engagement in writing. The assurance practitioner shall obtain the agreement of the responsible party, that it acknowledges and understands its responsibility:
- (a) In an attestation engagement, for evaluating the compliance activity against the compliance requirements and providing a written Statement regarding the outcome of that evaluation and for having a reasonable basis for the written Statement;
 - (b) For identifying suitable compliance requirements and whether they were specified by law, regulation, contract, another party (for example, a user group or a professional body) or developed by the responsible party or assurance practitioner;
 - (c) For providing the assurance practitioner with:
 - (i) Access to all information, such as records, documentation and other matters of which the responsible party is aware are relevant to the compliance outcomes of the activity;

⁷ See ASAE 3000, paragraphs Aus 20.1 and ASA 102 Compliance with Ethical Requirements when Performing Audits, Reviews and Other assurance Engagements.

⁸ See ASAE 3000, paragraph 24(b)(i).

⁹ See ASAE 3000, paragraph 24(b).

¹⁰ See ASAE 3000, paragraph 27.

Proposed Standard on Assurance Engagements ASAE 3100
Compliance Engagements

- (ii) Additional information that the assurance practitioner may request from the responsible party for the purposes of the assurance engagement; and
- (iii) Unrestricted access to persons within the entity from whom the assurance practitioner determines it necessary to obtain evidence.

25. The terms of engagement shall identify:

- (a) The scope of the engagement;
- (b) Whether the engagement is a reasonable or limited assurance engagement;
- (c) Whether the engagement is an attestation or direct engagement and, in the case of an attestation engagement, the form of the responsible party's or evaluator's evaluation of the compliance activity or Statement and whether that Statement will be available to intended users or only referenced in the assurance report; (Ref: Para. A17, A20)
- (d) ~~Throughout~~ the specified period ~~or as at the~~ specified date to be covered by the engagement; (Ref: Para. A18)
- (e) The compliance requirements against which the compliance activity will be evaluated;
- (f) The intended users of the assurance report;
- (g) The content of the assurance report, including whether it will be a short-form or long form report, including additional information such as the compliance requirements, procedures conducted, detailed findings and recommendations to meet the needs of the intended users; and (Ref: Par. A20)
- (h) Any other matters required by law or regulation (e.g. reporting all matters of non-compliance identified to the regulator¹¹) to be included in the terms of engagement. (Ref: Para. 27)

Acceptance of a Change in the Terms of the Engagement

26. If the engaging party requests a change in the terms of the engagement before the completion of the engagement, the assurance practitioner shall be satisfied that there is a reasonable justification for the change as required by ASAE 3000.¹² (Ref: Para. A16)

Assurance Report Prescribed by Law or Regulation

27. If law or regulation prescribe the compliance requirements for evaluation or the form and content of the assurance report, the assurance practitioner evaluates the compliance requirements and form and content of the assurance report. If the compliance requirements are unsuitable or if intended users might misunderstand the assurance report, the assurance practitioner shall: (Ref: Para. A17, A51)

- (a) Not accept the engagement unless additional explanation in the report mitigates these circumstances; or
- (b) Not include any reference within the assurance report to the engagement having been conducted in accordance with ASAE 3000 or this ASAE, if required to accept the engagement by law or regulation.

¹¹ An example of where this would apply is the compliance component of an AFSL Licensee FS 71 engagement where the Australian Securities and Investments Commission (ASIC) require reporting of all breaches.

¹² See ASAE 3000, paragraph 29.

Proposed Standard on Assurance Engagements ASAE 3100
Compliance Engagements

Quality Control

28. The assurance practitioner shall implement quality control procedures as required by ASAE 3000.¹³

Professional Scepticism, Professional Judgement and Assurance Skills and Techniques

29. The assurance practitioner shall apply professional scepticism, exercise professional judgement and apply assurance skills and techniques in planning and performing an assurance engagement on compliance as required by ASAE 3000.¹⁴ In applying professional scepticism, the assurance practitioner shall recognise the possibility that non-compliance due to fraud could exist, notwithstanding the assurance practitioner’s past experience of the honesty and integrity of the entity’s management and those charged with governance.

Planning and Performing the Engagement

Planning

30. The assurance practitioner shall plan the engagement so that it will be performed in an effective manner as required by ASAE 3000.¹⁵ (Ref: Para. A22)

Materiality

~~31.~~ The assurance practitioner shall consider materiality, as required by ASAE 3000,¹⁶ when determining the nature, timing and extent of procedures. (Ref: Para. A24-A29)

~~32-31.~~ The assurance practitioner shall identify any non-compliance as material if it is significant to the achievement of the compliance requirements to be concluded upon. During the engagement the assurance practitioner shall reassess the materiality of any non-compliance with compliance requirements if matters come to their attention which indicate that the basis on which the materiality was determined has changed.

~~33.~~ The assurance practitioner shall also consider materiality when evaluating the effect of accumulated deficiencies in the compliance framework or non-compliance with the compliance requirements. Material deficiencies or non-compliance are those which could significantly impact the compliance requirements being met and reasonably be expected to influence relevant decisions of the intended users. (Ref: Para. A43)

Obtaining an Understanding of the Compliance Framework and Compliance Requirements

Limited Assurance	Reasonable Assurance
<p>32L. The assurance practitioner shall obtain an understanding of the entity’s compliance framework and its key elements, the compliance requirements which are included in the scope of the engagement, and other engagement circumstances, and on the basis of that understanding, the assurance practitioner shall: (Ref: Para. A30-A32)</p> <p>(a) For a direct engagement, consider whether the identification, selection</p>	<p>32R. The assurance practitioner shall obtain an understanding of the entity’s compliance framework and its key elements, the compliance requirements which are included in the scope of the engagement, and other engagement circumstances, and on the basis of that understanding, the assurance practitioner shall: (Ref: Para. A30-A32)</p> <p>(a) For a direct engagement, consider whether the identification, selection</p>

¹³ See ASAE 3000, paragraphs 31-36.

¹⁴ See ASAE 3000, paragraphs 37-39.

¹⁵ See ASAE 3000, paragraph 40.

¹⁶ See ASAE 3000, paragraph 44.

**Proposed Standard on Assurance Engagements ASAE 3100
Compliance Engagements**

Limited Assurance	Reasonable Assurance
<p>or development of criteria<u>compliance requirements</u> is appropriate, and/or select or develop further suitable criteria;</p> <p>(b) For both attestation and direct engagements:</p> <p>(i) Identify areas where material<u>the risks that may cause</u> non-compliance with each of the compliance requirements to be concluded upon are likely to arise; and</p> <p>(ii) Use as a basis for designing and performing assurance procedures to<u>Respond to the</u> areas<u>risks</u> identified in paragraph 324L(b)(i) and use as a basis for designing and performing assurance procedures.</p>	<p>or development of criteria<u>compliance requirements</u> is appropriate, and/or select or develop further suitable criteria;</p> <p>(b) For both attestation and direct engagements:</p> <p>(i) Identify and assess the risks that may cause non-compliance with each of the compliance requirements to be concluded upon; and</p> <p>(ii) Use as a basis for designing and performing assurance procedures to<u>Respond to the</u> risks identified in paragraph 324R(b)(i) and use as a basis for designing and performing assurance procedures; and</p> <p>(c) Obtain an understanding of the relevant internal controls over the compliance activity to meet the compliance requirements, evaluat<u>ing</u> the design of those controls and determin<u>ing</u> whether they have been implemented.</p>

Identifying Risks of Fraud

~~35-33.~~ When performing risk assessment procedures and related activities to obtain an understanding of the compliance framework and other engagement circumstances, the assurance practitioner shall obtain sufficient information for use in identifying the risks of the compliance requirements not being met due to fraud. (Ref: Para. A33-A34)

~~Determining Whether and to What extent to use the Work of the Internal Audit Function~~ Obtaining an Understanding of the Internal Audit Function

34. The assurance practitioner ~~shall~~ determines whether the entity has an internal audit function and, if so, makes further enquiries to obtain an understanding of the activities and main findings of the internal audit function with respect to the compliance outcomes. (Ref: Para. A35)

35. If the assurance practitioner plans to use the work of the internal audit function in accordance with paragraph 36, the assurance practitioner shall evaluate it as required by ASAE 3000.¹⁷

Using the Work of the Internal Audit Function

36. If the assurance practitioner's evaluation of the internal audit function confirms that the work of the internal audit function can be used for purposes of the compliance engagement, then the

¹⁷ See ASAE 3000, paragraph 55.

Proposed Standard on Assurance Engagements ASAE 3100
Compliance Engagements

assurance practitioner shall determine the planned effect of the work of the internal audit function on the nature, timing or extent of the assurance practitioner's procedures and in doing so, shall consider: (Ref: Para. A36, A42-A43)

- (a) The nature and scope of work performed, or to be performed, on the compliance framework by the internal audit function;
- (b) The significance of that work to the assurance practitioner's conclusions; and
- (c) The degree of subjectivity involved in the evaluation of the evidence obtained in support of those conclusions.
- (d) Re-performing some of the work of the internal audit function that is planned to be used.

~~37.~~ ~~If the assurance practitioner plans to use the work of the internal audit function, in accordance with paragraph 37, the assurance practitioner shall evaluate it as required by ASAE 3000. (Ref: Para. A35)~~

~~38-37.~~ The use of internal auditors to provide direct assistance is prohibited in an assurance engagement conducted in accordance with this ASAE. Direct assistance is the performance of assurance procedures under the direction, supervision and review of the assurance practitioner.¹⁸ This prohibition does not preclude reliance on the work of the internal audit function to modify the nature or timing, or reduce the extent, of assurance procedures to be performed directly by the assurance practitioner. (Ref: Para. A36)

Obtaining Evidence

~~39-38.~~ Based on the assurance practitioner's understanding obtained under paragraph 324L and 324R, the assurance practitioner shall perform assurance procedures to respond to identified or assessed risks in paragraph 324L(b) to obtain limited or 324R(b) to obtain reasonable assurance to support the assurance practitioner's conclusion. (Ref: Para. A37-A38)

~~40-39.~~ The assurance practitioner shall design and perform additional procedures, the nature, timing and extent of which are responsive to the risks of material deficiency in the compliance framework or non-compliance with compliance requirements, having regard to the level of assurance required, reasonable or limited, as appropriate. (Ref: Para. A39)

Responses to Assessed Risks of Fraud

~~41-40.~~ The assurance practitioner shall treat those assessed risks of compliance requirements not being met due to fraud as significant risks, ~~and a~~ accordingly, the assurance practitioner shall design and perform further assurance procedures, on controls designed to mitigate such risks, ~~and~~ whose nature, timing and extent are responsive to those assessed risks, ~~In doing this the assurance practitioner shall have~~ regard to the level of assurance required, reasonable or limited, as appropriate. (Ref: Para. A34~~A32~~)

Obtaining Evidence Regarding the Compliance Activity

~~42-41.~~ When reporting on compliance throughout the specified period or as at a specified date, the assurance practitioner shall evaluate those compliance activities that the assurance practitioner has determined are necessary to meet the compliance requirements identified, and assess their compliance throughout the specified period or as at a specified date. (Ref: Para. A37)

Limited Assurance	Reasonable Assurance
-------------------	----------------------

¹⁸ See ASAE 3000, paragraphs 3 and Aus 20.1.

Proposed Standard on Assurance Engagements ASAE 3100
Compliance Engagements

Limited Assurance	Reasonable Assurance
<p>42L. The nature, timing and extent of evaluation of compliance activities, shall ordinarily be limited to discussion with entity personnel, observation of the system in operation and walk-through for an appropriate number of instances of material compliance activities to identify any non-compliance. Alternatively, the results of exception reporting, monitoring or other management controls may be examined to provide evidence about the operation of the compliance activity rather than directly testing it. (Ref: Para. A37)</p>	<p>42R. The nature, timing and extent of testing and evaluation of compliance activities, shall ordinarily include, in addition to discussion with entity personnel and observation of the activity in operation for non-compliance, re-performance of a sample of compliance activities, or other examination and follow up of the application of compliance activities, on a test basis to provide sufficient appropriate evidence on which to base a conclusion. The results of exception reporting, monitoring or other management controls may be examined to reduce the extent of direct testing and evaluation of the operation of the compliance activity but shall not eliminate it entirely. (Ref: Para. A37)</p>
<p>43L. The assurance practitioner shall apply professional judgement in determining the specific nature, timing and extent of procedures to be conducted, which will depend on the <u>identified areas assessed risks</u> of material non-compliance with the compliance requirements <u>which are likely to arise</u>. If the assurance practitioner determines that additional assurance procedures are required to dispel or confirm a suspicion that a material non-compliance exists, the performance of such additional procedures shall not convert the engagement to a reasonable assurance engagement as they relate to the reduction of risk to an acceptable level with respect to that matter alone. (Ref: Para. A38-A39)</p>	<p>43R. The assurance practitioner shall apply professional judgement in determining the specific nature, timing and extent of procedures to be conducted, which will depend on the assessed risks of material non-compliance with the compliance requirements. (Ref: Para. A38)</p>
	<p>44R. When determining the extent of testing and evaluation of compliance activities, the assurance practitioner shall consider matters including the characteristics of the population to be tested and evaluated, which includes the nature of the compliance activity, the frequency of their occurrence (for example, monthly, daily, a number of times per day), and the expected rate of non-compliance. Some compliance activities operate continuously, while others operate only at particular times, so the testing and evaluation of compliance shall be performed throughout the specified period of time that is sufficient to allow the practitioner to conclude. (Ref: Para. A39)</p>

Proposed Standard on Assurance Engagements ASAE 3100
Compliance Engagements

Limited Assurance	Reasonable Assurance

Sampling

46-45. When the assurance practitioner uses sampling to test compliance, the assurance practitioner shall: (Ref: Para. 44R)

- (a) Consider the purpose of the procedure and the characteristics of the compliance activity from which the sample will be drawn when designing the sample;
- (b) Determine a sample size sufficient to reduce sampling risk to an acceptably low level;
- (c) Select items for the sample in such a way that each sampling unit in the population has a chance of selection and the sample is representative of the population; and
- (d) If unable to apply the designed procedures, or suitable alternative procedures, to a selected item, treat that item as a deviation.

Non-compliance with Other Laws or Regulations

47-46. If the assurance practitioner becomes aware of information concerning an instance of non-compliance or suspected non-compliance with respect to other laws and regulations, the assurance practitioner shall:

- (a) Obtain an understanding of the nature of the act and the circumstances in which it occurred and if the assurance practitioner suspects there may be non-compliance;
- (b) Discuss the matter with management and where appropriate, if those matters are intentional or material, those charged with governance unless such communication is prohibited by law or regulation, or unless management or those charged with governance are suspected of involvement in the non-compliance, in which case a level of authority above those suspected of involvement;
- (c) Determine whether the assurance practitioner has a responsibility under law or regulation, ethical requirements or other right to report the identified or suspected non-compliance to parties outside of the entity and, if necessary, seek legal advice;
- (d) If sufficient information regarding suspected non-compliance cannot be obtained, evaluate the effect of insufficient evidence on the assurance conclusion;
- (e) Evaluate the implications of non-compliance in relation to other aspects of the engagement, including the risk assessment and the reliability of written representations; and

Comment [MM1]: Noclar not included in ASAE 3000 as issued in June 2014. This Noclar paragraph was included and is consistent with ASAE 3150 as ASAE 3000 is silent and presents a gap on this issue. The updated markups use wording in proposed Noclar std which is yet to be approved. The other alternative is that this para is not required as para 19 is a cover-all. **Board need to advise what approach they want to take re: Noclar?**

Work Performed by an Assurance Practitioner’s Expert

48-47. When the assurance practitioner plans to use the work of an assurance practitioner’s expert, the assurance practitioner shall comply with the requirements in ASAE 3000.¹⁹ (Ref: Para. A40)

Work Performed by Another Assurance Practitioner or a Responsible Party’s or Evaluator’s Expert, ~~or an Internal Auditor~~

49-48. If the assurance practitioner plans to use information prepared using the work of another assurance practitioner or a responsible party’s or evaluator’s expert ~~or an internal auditor~~, as

¹⁹ See ASAE 3000, paragraph 52.

Proposed Standard on Assurance Engagements ASAE 3100
Compliance Engagements

evidence, the assurance practitioner shall comply with the requirements of ASAE 3000.²⁰
(Ref: Para. A41-A42)

Evaluation and Communication of Evidence and Communication of Non-Compliance

~~50-49.~~ ASAE 3000²¹ requires the assurance practitioner to accumulate uncorrected misstatements identified during the engagement other than those that are clearly trivial. Misstatements in a compliance engagement are instances of non-compliance with the compliance requirements.

~~51-50.~~ Evaluation of evidence obtained by the assurance practitioner shall include any impact of corrected misstatements identified during the compliance engagement.

~~52-51.~~ The assurance practitioner evaluates individually and in aggregate, whether non-compliance with the compliance requirements is material. (Ref: Para. A44)

~~53-52.~~ The assurance practitioner communicates these material non-compliances with the compliance requirements to the responsible party or those charged with governance as soon as practicable.

Comment [IMM2]: This requirement is consistent with the extant. If we are going to require "all" to be communicated even if not required by law or regulation this will increase the current requirement. PAG discussion felt the material override should be retained and the assurance practitioner can apply professional judgement if they believe anything 'significant' but not trivial needs to be reported. **Board need to advise if they want this changed?**

Written Representations

~~54-53.~~ The assurance practitioner shall request the responsible party, or other relevant person(s) within the entity to provide written representations, in addition to those required by ASAE 3000,²² that the responsible party: (Ref: Para. A45)

- (a) In the case of an attestation engagement, reaffirms their Statement regarding the outcome of the responsible party's evaluation of the compliance activity against the compliance requirements throughout the specified period or as at a specified date;
- (b) Acknowledges its responsibility for the compliance activity, including identifying the risks that threaten achievement of the compliance requirements being met, and designing, implementing and maintaining internal controls to mitigate those risks, including the risk of fraud, so that those risks will not prevent achievement of the compliance requirements;
- (c) Has provided the assurance practitioner with all relevant information and access agreed to, as set out in paragraph 243(c)(i);
- (d) Has disclosed to the assurance practitioner any of the following of which it is aware may be relevant to the engagement:
 - (i) Instances of non-compliance with the compliance requirements; or
 - (ii) Any events subsequent to the specified period or as at the specified date covered by the assurance practitioner's conclusion up to the date of the assurance report that could have a significant effect on the assurance practitioner's conclusion.

The assurance practitioner shall evaluate written representations in accordance with ASAE 3000. (Ref: Para. A46)

Subsequent Events

~~55-54.~~ When relevant to the compliance engagement, the assurance practitioner shall consider the effect on the compliance outcome of events up to the date of the assurance report, and shall respond appropriately to facts that become known to the assurance practitioner after the date

²⁰ See ASAE 3000, paragraphs 53-54.

²¹ See ASAE 3000, paragraph 51.

²² See ASAE 3000, paragraph 56.

Proposed Standard on Assurance Engagements ASAE 3100
Compliance Engagements

of the assurance conclusion, that had they been known to the assurance practitioner at that date, may have caused the assurance practitioner to amend the assurance conclusion. The extent of consideration of subsequent events depends on the potential for such events to impact the assurance practitioner's conclusion. The assurance practitioner has no responsibility to perform any procedures regarding the compliance outcome after the date of the assurance report. (Ref: Para. A48-A49)

Forming the Assurance Conclusion

- | ~~56-55.~~ The assurance practitioner shall evaluate the sufficiency and appropriateness of the evidence obtained in the context of the engagement and, if necessary, attempt to obtain further evidence. If the assurance practitioner is unable to obtain necessary further evidence, the assurance practitioner shall consider the implications for the assurance practitioner's conclusion in accordance with ASAE 3000.²³ The assurance practitioner shall qualify their conclusion if the possible effects of undetected non-compliance with the compliance requirements due to an inability to obtain sufficient appropriate evidence could be material, and shall disclaim their conclusion if the possible effects could be both material and pervasive.
- | ~~57-56.~~ When the assurance practitioner forms a conclusion in accordance with ASAE 3000,²⁴ the assurance practitioner shall evaluate the materiality, individually and in aggregate whether due to fraud or error, of any non-compliance with the compliance requirements. If the non-compliances identified are: (Ref: Para. A44-A45)
 - (a) Material but not pervasive, the assurance practitioner shall qualify their assurance conclusion with respect to the relevant matter; or
 - (b) Material and pervasive, the assurance practitioner shall issue an adverse conclusion.

Preparing the Assurance Report

- | ~~58-57.~~ The assurance practitioner shall prepare the assurance report in accordance with ASAE 3000²⁵ for attestation engagements and shall also apply those requirements for direct engagements.

Assurance Report Content

- | ~~59-58.~~ For both attestation and direct engagements, the assurance practitioner shall include in the assurance report the basic elements required by ASAE 3000,²⁶ which are at a minimum:
 - (a) A title, indicating that it is an independent assurance report;
 - (b) An addressee;
 - (c) An identification of whether reasonable or limited assurance has been obtained by the assurance practitioner;
 - (d) Identification of the compliance requirements;
 - (e) Whether the assurance practitioner is reporting on compliance throughout the specified period or as at a specified date;
 - (f) In the case of an attestation engagement, reference to the responsible party's Statement as required by paragraph 243(a) and whether that Statement is available to intended users by accompanying the assurance report, reproduction in the assurance report or another identified source;

²³ See ASAE 3000, paragraph 66.

²⁴ See ASAE 3000, paragraphs 64-65.

²⁵ See ASAE 3000, paragraphs 67-69.

²⁶ See ASAE 3000, paragraph 69.

Proposed Standard on Assurance Engagements ASAE 3100
Compliance Engagements

- (g) Identification of the overall and/or specific criteria used for evaluating the compliance of the activity ~~and the party specifying those criteria~~;
- (h) If appropriate, a description of any significant inherent limitations associated with the evaluation of the compliance activity against the compliance requirements;
- (i) A statement that the responsible party or evaluator is responsible for:
 - (i) In an attestation engagement:
 - a. Providing a Statement with respect to the outcome of the evaluation of the compliance activity against the compliance requirements;
 - b. Identifying the compliance requirements (where not identified by Parliament, the Government, law or regulation, or another party, for example, a user group or a professional body); and
 - (ii) In both an attestation and a direct engagement:
 - a. The compliance activity covered by the assurance practitioner's report;
 - b. ~~Identifying, d~~ Designing and implementing controls to enable the compliance requirements to be met and to monitor ongoing compliance;
- (j) A statement that the assurance practitioner's responsibility is to express a conclusion on whether the compliance requirements have, in all material respects, been met;
- (k) A statement that the engagement was performed in accordance with ASAE 3100 *Compliance Engagements*;
- (l) A statement that the ~~-~~firm of which the assurance practitioner is a member applies ASQC 1;
- (m) A statement that the assurance practitioner complies with the independence and other relevant ethical requirements related to assurance engagements;
- (n) An informative summary of the work performed as a basis for the assurance practitioner's conclusion. In the case of a limited assurance engagement, an appreciation of the nature, timing, and extent of procedures performed is essential to understanding the assurance practitioner's conclusion. In a limited assurance engagement, the summary of the work performed shall state that: (Ref. Para. A52-A56)
 - (i) The procedures performed in a limited assurance engagement vary in nature and timing from, and are less in extent than for, a reasonable assurance engagement; and
 - (ii) Consequently, the level of assurance obtained in a limited assurance engagement is substantially lower than the assurance that would have been obtained had a reasonable assurance engagement been performed;
- (o) When the criteria used to evaluate the compliance requirements are available only to specific intended users, or are relevant only for a specific purpose, a statement restricting the use of the assurance report to those intended users or that purpose; (Ref. Para. A57)
- (p) Either, the assurance practitioner's opinion for a reasonable assurance engagement or the assurance practitioner's conclusion for a limited assurance engagement about

Proposed Standard on Assurance Engagements ASAE 3100
Compliance Engagements

whether, in all material respects the entity complied with the compliance requirements throughout the specified period or as at a specified date;

- (q) When the assurance practitioner expresses a modified conclusion, the assurance report shall contain:
 - (i) A section (entitled: Basis for Qualified/Adverse/Disclaimer of Conclusion/Opinion) that provides a description of the matter(s) giving rise to the modification; and
 - (ii) A section that contains the assurance practitioner's modified conclusion;
- (r) The assurance practitioner's signature, the date of the assurance report and the location in the jurisdiction where the assurance practitioner practices.

- | ~~60-59.~~ If the assurance practitioner provides a long-form assurance report to meet the information needs of users, as agreed in the terms of engagement, or as required by law or regulation, the assurance practitioner's report shall include a separate section, or an attachment, containing any other information and explanations that are not intended to affect the assurance practitioner's conclusion and are clearly identified as such. (Ref: Para. A50)
- | ~~61-60.~~ If the assurance practitioner is required to conclude on other subject matters under different AUASB standards in conjunction with an engagement to report under this ASAE, the assurance report shall include a separate section for each subject matter in the assurance report, clearly differentiated by appropriate section headings.

Emphasis of Matter and Other Matter Paragraphs

- | ~~62-61.~~ The assurance practitioner shall include an Emphasis of Matter or Other Matter paragraph in the circumstances provided for in ASAE 3000²⁷ for an attestation engagement. In a direct engagement, if the assurance practitioner considers it necessary to communicate a matter that, in the assurance practitioner's judgement, is relevant to intended users' understanding of the engagement, the assurance practitioner's responsibilities or the assurance report, the assurance practitioner shall include in the assurance report an Other Matter paragraph, with an appropriate heading, that clearly indicates the assurance practitioner's conclusion is not modified in respect of the matter.

Modified Conclusions

- | ~~63-62.~~ If the assurance practitioner concludes that the compliance activity has not met the compliance requirements throughout the specified period or as at a specified date; or the assurance practitioner is unable to obtain sufficient appropriate evidence, the assurance practitioner's conclusion shall be modified, and the assurance practitioner's report shall include a section with a clear description of all the reasons for the modification. (Ref: Para. A58-A60)

Scope Limitation

- | ~~64-63.~~ When a scope limitation is imposed by the circumstances of the particular engagement, the assurance practitioner shall attempt to perform alternative procedures to overcome the limitation. When a scope limitation exists and remains unresolved, the wording of the assurance practitioner's conclusion shall indicate that it is qualified as to the effects of any instances of non-compliance with the compliance requirements, which might have been identified had the limitation not existed. If the effect of the unresolved scope limitation is both material and pervasive, the assurance practitioner shall express a disclaimer of conclusion. (Ref: Para. A61)

²⁷ See ASAE 3000, paragraph 73.

Proposed Standard on Assurance Engagements ASAE 3100
Compliance Engagements

Other Communication Responsibilities

- | ~~65-64.~~ The assurance practitioner shall consider whether, pursuant to the terms of the engagement, if applicable, and other engagement circumstances, any matter has come to the attention of the assurance practitioner that is to be communicated with the responsible party, the evaluator, the engaging party, those charged with governance or others, as required by ASAE 3000.²⁸ If during the course of the engagement the assurance practitioner identifies any non-compliance with the entity's compliance requirements other than those which are clearly trivial, the assurance practitioner shall report to an appropriate level of management or those charged with governance on a timely basis those matters of non-compliance. (Ref: Para. A63)
- | ~~66-65.~~ In limited circumstances the assurance practitioner may be required by law or regulation and under the terms of the engagement to report all instances of non-compliance with the compliance requirements to the regulator²⁹.
- | ~~67-66.~~ If the assurance practitioner has identified a fraud or has obtained information that indicates that a fraud may exist, the assurance practitioner shall communicate these matters on a timely basis to the appropriate level of management or those charged with governance in order to inform those with primary responsibility for the prevention and detection of fraud of matters relevant to their responsibilities. The assurance practitioner shall determine whether there is a responsibility to report the occurrence or suspicion to a party outside the entity. (Ref: Para. A62)
- | ~~68-67.~~ The assurance practitioner shall design engagement procedures to gather sufficient appropriate evidence to form a conclusion in accordance with the terms of the engagement. In the absence of a specific requirement in the terms of engagement the assurance practitioner does not have a responsibility to design procedures to identify matters outside the scope of the engagement that may be appropriate to report to management or those charged with governance.

Documentation

- | ~~69-68.~~ The assurance practitioner shall prepare documentation in accordance with ASAE 3000.³⁰ In documenting the nature, timing and extent of procedures performed as required by ASAE 3000, the assurance practitioner shall record (Ref: Para. A64):
 - (a) The identifying characteristics of the compliance activity being tested;
 - (b) Who performed the work and the date such work was completed; and
 - (c) Who reviewed the work performed and the date and extent of such review.
- | ~~70-69.~~ If the assurance practitioner uses specific work of the internal audit function, the assurance practitioner shall document the conclusions reached regarding the evaluation of the adequacy of the work of the internal audit function, and the procedures performed by the assurance practitioner on that work.

* * *

²⁸ See ASAE 3000, paragraph 78.

²⁹ As an example where this would apply is the compliance component of an AFSL Licensee FS 71 engagement where ASIC require reporting of all breaches.

³⁰ See ASAE 3000, paragraphs 79-83.

Application and Other Explanatory Material

Application (Ref: Para. 1)

- A1. Engagements which are covered by this ASAE and those that are covered by other subject matter specific ASAEs have been further illustrated at Appendix 4.

Introduction (Ref: Para. 3-14~~3~~)

- A2. The primary purpose of an assurance engagement is the conduct of assurance procedures to provide an assurance conclusion. However, the assurance practitioner is not precluded from providing recommendations for improvements to the compliance framework or compliance activities in conjunction with or as a result of conducting an assurance engagement to report on compliance.
- A3. The risks, compliance requirements and related controls addressed in an engagement under this ASAE may relate to ~~a broad range of any~~ subject matter relevant to the entity. The subject matter can be any activity of the entity, such as: compliance with legislation or regulation; contractual arrangements or policy and procedures.
- A4. The primary practical difference for the assurance practitioner between an attestation and a direct engagement is the additional work effort for a direct engagement when planning the engagement and understanding the compliance framework and other engagement circumstances e.g. criteria to be applied. In a direct engagement the assurance practitioner ~~identifies or selects, or has imposed on them, the criteria~~ ~~compliance requirements~~ which address the purpose or overall objective of the compliance engagement. This difference affects the assurance practitioner's work effort in planning a direct engagement if the compliance requirements have not been identified or documented and in understanding the entity's compliance framework where a description is not available.
- A5. In a three party relationship, which is an element of an assurance engagement,³¹ the responsible party may or may not be the engaging party, but is responsible for the compliance activities which are the underlying subject matter of the engagement and is a separate party from the intended users. The responsible party and the intended users may both be internal to the entity, for example if the responsible party is at an operational level of management and the intended users are at the level of those charged with governance, such as the Board or Audit Committee. See Appendix 1 for a discussion of how each of these roles relate to an assurance engagement on compliance.

Ethical Requirements (Ref: Para. 19)

- A6. In accepting an assurance engagement on compliance, the assurance practitioner, in order to comply with relevant ethical requirements, considers whether the assurance practitioner has provided internal audit or consulting services with respect to the compliance framework or implementation of controls at the entity, as any such past or current engagements are likely to impact on the assurance practitioner's independence and are likely to preclude acceptance of the engagement.

³¹ See Framework for Assurance Engagements.

Proposed Standard on Assurance Engagements ASAE 3100
Compliance Engagements

Acceptance and Continuance

Competence and Capabilities to Perform the Engagement

- A7. Relevant competence and capabilities to perform the compliance engagement, as required by ASAE 3000³² by persons who are to perform the engagement, include matters such as the following:
- Knowledge of the relevant industry, compliance frameworks, the nature of the overall compliance requirements (for example: emissions quantification or regulatory compliance).
 - An understanding of controls, IT and systems.
 - Experience in evaluating risks as they relate to the compliance requirements.
 - Experience in the design and execution of tests of compliance and the evaluation of the results.

Rational Purpose

- A8. When considering the acceptance of a limited assurance engagement on compliance, ASAE 3000 requires the assurance practitioner to determine whether a meaningful level of assurance is expected to be able to be obtained,³³ which may include whether a limited assurance engagement is likely to be meaningful to users. In making this assessment, the assurance practitioner considers the intended users of the assurance report and whether they are likely to understand the limitations of a limited assurance engagement, including the need to read the assurance report in detail to understand the assurance procedures performed and the assurance obtained.

Assessing the Appropriateness of the Subject Matter (Ref: Para. 21)

- A9. An appropriate subject matter is:
- (a) Identifiable, and capable of consistent evaluation against the identified criteria; and
 - (b) Such that the information about it can be subjected to procedures for gathering sufficient appropriate evidence to support a reasonable assurance or limited assurance conclusion, as appropriate.
- A10. Examples of subject matters that may be appropriate for a compliance engagement include compliance with the following:
- General Insurers and Insurance Groups - Risk Management Strategy & Reinsurance Management Strategy (RMS/REMS).
 - Treasurer's Instructions.
 - Managed Investment Schemes – Compliance Plan.
 - Registered Superannuation Entity – SIS Act requirements (SPS 310).
 - Financial Services Licensee – Corporations Act 2001 requirements.

³² See ASAE 3000, paragraph 32.

³³ See ASAE 3000, paragraph 24(b)(vi).

Proposed Standard on Assurance Engagements ASAE 3100
Compliance Engagements

A11. For further guidance on assessing the appropriateness of the subject matter refer to Appendix 3 and ASAE 3000³⁴.

Assessing the Suitability of the Criteria (Ref: Para. 23)

A12. Where the criteria are prescribed by legislation or regulation the criteria will ordinarily be deemed to be suitable for the purposes of the compliance engagement. In limited circumstances where this is not the case, the assurance practitioner needs to assess the suitability of the criteria.

A13. In the context of a compliance engagement, examples of criteria include:

- Externally imposed criteria under law or directives, including:
 - Legislation.
 - Regulation.
 - Other statutory requirements (e.g. ASIC Regulatory Guides and Practice Notes or APRA Prudential Standards).
 - Ministerial directives.
 - Industry or professional obligations (professional standards or guidance, codes of practice or conduct).
 - Enforceable contractual obligations.
 - Enforceable undertakings.
- Internally imposed criteria, as determined by management, including:
 - Organisational policies and procedures.
 - Frameworks, for example, compliance framework based on ISO 19600 – Compliance Management Systems

A14. Criteria need to be identified by the parties to the engagement and agreed by the engaging party and the assurance practitioner. The assurance practitioner may need to discuss the criteria to be used with those charged with governance, management and the intended users of the report. Criteria can be either established or specifically developed. The assurance practitioner normally concludes that established criteria embodied in laws or regulations or issued by professional bodies, associations or other recognised authorities that follow due process are suitable when the criteria are consistent with the objective. Other criteria may be agreed to by the intended users of the assurance practitioner's report, or a party entitled to act on their behalf, and may also be specifically developed for the engagement.

A15. In situations where the criteria have been specifically developed for the engagement, including where the assurance practitioner develops or assists in developing criteria, the assurance practitioner obtains from the intended users or a party entitled to act on their behalf, acknowledgment that the specifically developed criteria are sufficient for the user's purposes. (Ref: Para. 23²⁶)

A16. The criteria may need to be amended during the engagement, if for example more information becomes available or the circumstances of the entity change. Any changes in the criteria are discussed with the engaging party and, if appropriate the intended users.

³⁴ See ASAE 3000, paragraph 24(b)(i).

Proposed Standard on Assurance Engagements ASAE 3100
Compliance Engagements

Agreeing on the Terms of the Engagement (Ref: Para. 24-25)

- A17. When agreeing whether the engagement is to be conducted as an attestation or direct engagement, the assurance practitioner considers factors such as whether:
- (a) There is a regulatory requirement or users need an evaluation of the compliance activity by the responsible party or evaluator (Ref: Para. 27);
 - (b) The entity has the resources and expertise to prepare a suitable description or documentation of the compliance activity, compliance requirements and related controls and conduct a meaningful evaluation of the compliance outcome; or
 - (c) It is more cost effective for the entity to identify the specific compliance activities, requirements and related controls, evaluate the compliance outcome as the basis for an attestation engagement, rather than it being necessary for the assurance practitioner to do so in a direct engagement.
- A18. The assurance practitioner considers the needs of users and the period in which the compliance activity has been in place in agreeing the specified date or the specified period to be covered by the assurance engagement, so that the report is not likely to be misleading.
- A19. If the criteria are available when agreeing the terms of engagement, they may be listed or attached to the engagement letter or other written terms.
- A20. When agreeing whether the report will be in long-form, including matters such as evaluation of compliance procedures and detailed findings, the assurance practitioner considers both the needs of users and the risks of users misunderstanding the context of the procedures conducted or the findings reported. Reporting evaluation of compliance procedures and findings may be appropriate where the users are knowledgeable with respect to assurance and the compliance requirements and, therefore, not likely to misinterpret those findings.
- A21. An example engagement letter is contained in Appendix 5.

Planning and Performing the Engagement

Planning (Ref: Para. 30)

- A22. The nature and extent of planning activities will vary with the compliance engagement circumstances, for example the size and complexity of the compliance activity and requirements, the assurance practitioner's previous experience with this area and the entity as a whole. Examples of the main matters to be considered when developing the engagement plan include:
- (a) Matters affecting the industry in which the entity operates, for example economic conditions, laws and regulations, and technology;
 - (b) Risks to which the entity is exposed that are relevant to the compliance activity being examined;
 - (c) The quality of the control environment within the entity and the role of the governing body, audit committee and internal audit function;
 - (d) Knowledge of the entity's internal control structure obtained during other engagements;
 - (e) The extent of recent changes if any, in the entity, its operations or its compliance framework;
 - (f) Methods adopted by management to evaluate the effectiveness of the compliance framework;

Proposed Standard on Assurance Engagements ASAE 3100
Compliance Engagements

- (g) Preliminary judgements about significant risk;
 - (h) The nature and extent of evidence likely to be available;
 - (i) The nature of control procedures relevant to the compliance activity and their relationship to the compliance framework taken as a whole;
 - (j) The assurance practitioner's preliminary judgement about the effectiveness of the compliance framework taken as a whole and of the control procedures within the framework;
 - (k) The terms of the compliance engagement;
 - (l) The characteristics of the compliance activity and the identified criteria;
 - (m) Identification of intended users and their needs, and consideration of materiality and the components of compliance engagement risk; and
 - (n) Personnel and expertise requirements, including the nature and extent of involvement by experts.
- A23. The assurance practitioner may decide to discuss elements of planning with management or other appropriate party when determining the scope of the engagement or to facilitate the conduct and management of the engagement (for example, to co-ordinate some of the planned procedures with the work of the entity's personnel). Although these discussions often occur, the overall engagement strategy and the engagement plan remain the assurance practitioner's responsibility. When discussing matters included in the overall engagement strategy or engagement plan, care is required in order not to compromise the effectiveness of the engagement. For example, discussing the nature and timing of detailed procedures with the entity may compromise the effectiveness of the engagement by making the procedures too predictable.

Materiality (Ref: Para. 31-1)

A24. The assurance practitioner applies the same considerations in both limited and reasonable assurance engagements regarding what represents a material compliance requirement, since such judgements are not affected by the level of assurance being obtained.

[A25.](#) The assurance practitioner considers materiality of the compliance requirements at the planning stage, reassesses materiality during the engagement based on the findings, and considers the materiality of any identified deficiencies in the compliance framework and/or non-compliance with compliance requirements.

[A26.](#) The assurance practitioner needs to consider materiality when determining the nature, timing and extent of evidence-gathering procedures, and when evaluating whether a non-compliance is material. In considering materiality, the assurance practitioner ordinarily understands and assesses what factors might influence the decisions of the intended users.

~~A25:~~[A27.](#) The assurance practitioner shall also consider materiality when evaluating the effect of accumulated deficiencies in the compliance framework or non-compliance with the compliance requirements. Material deficiencies or non-compliance are those which could significantly impact the compliance requirements being met and reasonably be expected to influence relevant decisions of the intended users.

~~A26:~~[A28.](#) The assurance practitioner considers materiality in the context of quantitative and qualitative factors, such as relative magnitude of instances of detected or suspected non-compliance, the nature and extent of the effect of these factors on the evaluation of compliance with the compliance requirements, and the interests of the intended users. The assessment of materiality and the relative importance of quantitative and qualitative factors in

Proposed Standard on Assurance Engagements ASAE 3100
Compliance Engagements

a particular engagement are matters for the assurance practitioner's professional judgement, taking into account specific regulatory reporting requirements.

- | ~~A27:A29.~~ Quantitative and qualitative factors which the assurance practitioner considers when assessing materiality includes:
- The magnitude of the instances of detected or suspected non-compliance with the compliance requirements.
 - The financial impact of the non-compliance on the entity as a whole.
 - The nature of the non-compliance – one off or systemic.
 - Evidence of a robust compliance framework in place to detect, rectify and report non-compliance.
 - Commonly accepted practices within the relevant industry.
 - The nature of relevant transactions, whether they involve high volumes, large dollar values and complex transactions relative to the compliance activity as a whole.
 - The extent of interest shown in particular aspects of the compliance activity by, for example, governing body, regulatory authorities and agencies or the public.

Obtaining an Understanding of the Compliance Framework and Compliance Requirements
(Ref: Para. 32)

- | ~~A28:A30.~~ The assurance practitioner's understanding of the compliance framework and compliance requirements, ordinarily, has a lesser depth for a limited assurance engagement than for a reasonable assurance engagement. The assurance practitioner's procedures to obtain this understanding may include:
- Review and understand the relevant compliance requirements.
 - Enquiring of those within the entity who, in the assurance practitioner's judgement, may have relevant information.
 - Observing operations.
 - Inspecting documents, reports, printed and electronic records.
 - Re-performing compliance procedures.
- | ~~A29:A31.~~ The nature and extent of procedures to gain this understanding are a matter for the assurance practitioner's professional judgement and will depend on factors such as:
- (a) The entity's size and complexity;
 - (b) The nature of the activity to be examined, including the compliance requirement(s) to which the compliance procedures are directed and the risk that those compliance requirements will not be met;
 - (c) The extent to which IT is used; and
 - (d) The documentation available.
- | ~~A30:A32.~~ The nature and extent of planning and subsequent evidence-gathering procedures will vary with the engagement circumstances, and the maturity of the entity's compliance framework.

Proposed Standard on Assurance Engagements ASAE 3100
Compliance Engagements

Elements of an entity's compliance framework ordinarily include the following:

- Procedures for identifying and updating compliance requirements.
- Staff training and awareness programs.
- Procedures for assessing the impact of compliance obligations on the entity's key business activities.
- Controls embedded within key business processes designed to ensure compliance with obligations.
- Processes to identify and monitor the implementation of further mitigating actions required to ensure that compliance obligations are met.
- A monitoring plan to test key compliance controls on a periodic basis and report exceptions.
- Procedures for identifying, assessing, rectifying and reporting non-compliance.
- Periodic sign off by management and/or external third party outsourced service providers as to compliance with obligations.
- A compliance governance structure that establishes responsibility for the oversight of compliance control activities with those charged with governance, typically a Board Audit, Risk Management or Compliance Committee.

Identifying Risks of Fraud (Ref: Para. 33,-4042)

~~A31-A33.~~ Management is in a unique position to perpetrate fraud because of their ability to manipulate the entity's records or prepare fraudulent reports by overriding controls that otherwise appear to be operating effectively. Although the level of risk of management override of controls will vary from entity to entity, the risk is nevertheless present in all entities. Due to the unpredictable way in which such override could occur, it is a risk that compliance requirements will not be met due to fraud and thus is a significant risk.

~~A32-A34.~~ The assurance practitioner may consider undertaking the following procedures to obtain sufficient appropriate evidence of the risk of fraud in relation to the compliance requirements:-

- (a) Make enquiries of management regarding:
 - (i) Management's assessment of the risk that controls may be circumvented due to fraud, including the nature, extent and frequency of such assessment;
 - (ii) Management's process for identifying and responding to the risks of fraud;
 - (iii) Management's communication, if any, to those charged with governance regarding its processes for identifying and responding to the risks of fraud; and
 - (iv) Management's communication, if any, to employees regarding its views on corrupt or fraudulent business practices and unethical behaviour;
- (b) Make enquiries of those charged with governance, management, and others within the entity as appropriate, to determine whether they have knowledge of any actual, suspected or alleged fraud affecting the entity;
- (c) Make enquiries of the internal audit function, where it exists, to determine whether it has knowledge of any actual, suspected or alleged fraud affecting the entity, and to obtain its views about the risks of fraud;

Proposed Standard on Assurance Engagements ASAE 3100
Compliance Engagements

- (d) Obtain an understanding of how those charged with governance exercise oversight of management's processes for identifying and responding to the risks of fraud in the entity and the internal control that management has established to mitigate these risks as far as they relate to the compliance requirements;
- (e) Consider whether other information obtained by the assurance practitioner indicates risks of compliance requirements not being met due to fraud, for which mitigating controls are necessary;
- (f) Evaluate whether the information obtained from the other risk assessment procedures and related activities performed indicates that one or more fraud risk factors are present; and
- (g) Identify controls over matters for which decisions or actions are not routine, such as adjustments to records, development of estimates and activities outside the normal course of business.

Obtaining an Understanding of the Internal Audit Function (Ref: Para. 34-37)

- | ~~A33-A35.~~ In obtaining an understanding of the compliance framework, including controls, the assurance practitioner determines whether the entity has an internal audit function and its effect on the controls within the compliance framework. The internal audit function ordinarily forms part of the entity's internal control and governance structures. The responsibilities of the internal audit function may include, for example, monitoring of internal control, risk management, and review of compliance with laws and regulations, and is considered as part of the assurance practitioner's assessment of risk.
- | ~~A34-A36.~~ An effective internal audit function may enable the assurance practitioner to modify the nature and/or timing, and/or reduce the extent of assurance procedures performed, but cannot eliminate them entirely.

Obtaining Evidence

- | ~~A35-A37.~~ Compliance engagements require the application of assurance skills and techniques to gather sufficient appropriate evidence as part of an iterative, systematic assurance engagement process. As the assurance practitioner performs planned procedures, the evidence obtained may differ significantly from that on which the planned procedures were based and cause the assurance practitioner to perform additional procedures. In the case of an attestation engagement, such procedures may include asking the responsible party to examine the matter identified by the assurance practitioner, and to make amendments to the description or Statement, if appropriate.
- | ~~A36-A38.~~ The assurance practitioner may become aware of a matter(s) that causes the assurance practitioner to believe that there are deficiencies in the compliance framework or the compliance activity is not compliant with the compliance requirements. In such cases, the assurance practitioner may investigate such differences by, for example, inquiring of the appropriate party(ies) or performing other procedures as appropriate in the circumstances.

Limited and Reasonable Assurance Engagements (Ref: Para. 42~~40~~)

- | ~~A37-A39.~~ The level of assurance obtained in a limited assurance engagement is lower than in a reasonable assurance engagement, therefore the procedures the assurance practitioner performs in a limited assurance engagement are different in nature and timing from, and are less in extent than for, a reasonable assurance engagement. The primary differences between the assurance practitioner's overall responses to assessed risks and further procedures conducted in a reasonable assurance engagement and a limited assurance engagement on compliance include:

Proposed Standard on Assurance Engagements ASAE 3100
Compliance Engagements

- (a) The emphasis placed on the nature of various procedures as a source of evidence will likely differ, depending on the engagement circumstances. For example, the assurance practitioner may judge it to be appropriate in the circumstances of a particular limited assurance engagement to place relatively greater emphasis on indirect evaluation of compliance activities, such as enquiries of the entity's personnel, and relatively less emphasis, on evaluation of compliance activities, such as observation, re-performance or inspection, than may be the case for a reasonable assurance engagement.
- (b) In a limited assurance engagement, the further procedures performed are less in extent than in a reasonable assurance engagement in that those procedures may involve:
 - (i) Selecting fewer items for examination;
 - (ii) Performing fewer types of procedures; or
 - (iii) Performing procedures at fewer locations.

Work Performed by an Assurance Practitioner's Expert (Ref: Para. 47)

~~A38.A40.~~ ASAE 3000³⁵ provides application material for the circumstances where an assurance practitioner's expert is involved in the engagement. This material may also be used as guidance when using the work of another assurance practitioner or a responsible party's or evaluator's expert.

Work Performed by Another Assurance Practitioner or a Responsible Party's or Evaluator's Expert, or an Internal Auditor (Ref: Para. 48)

~~A39.A41.~~ When information on compliance activities to be used as evidence has been prepared using the work of a responsible party's or evaluator's expert, the nature, timing and extent of procedures with respect to the work of the responsible party's or evaluator's expert may be affected by such matters as:

- (a) The nature and complexity of the compliance activity to which the expert's work relates;
- (b) The risks of a material deficiency in the compliance framework or non-compliance with the compliance requirements throughout the specified period or as at a specified date;
- (c) The availability of alternative sources of evidence or mitigating controls;
- (d) The nature, scope and objectives of the expert's work;
- (e) Whether the expert is employed by the entity, or is a party engaged by it to provide relevant services;
- (f) The extent to which the responsible party or evaluator can exercise control or influence over the work of the expert;
- (g) Whether the expert is subject to technical performance standards or other professional or industry requirements;
- (h) The nature and extent of any controls within the entity over the expert's work;
- (i) The assurance practitioner's knowledge and experience of the expert's field of expertise; and

³⁵ See ASAE 3000, paragraphs A120-A134.

Proposed Standard on Assurance Engagements ASAE 3100
Compliance Engagements

- (j) The assurance practitioner's previous experience of the work of that expert.

Work Performed by the Internal Audit Function (Ref: Para. 3437-3740)

~~A40-A42.~~ The nature, timing and extent of the assurance practitioner's procedures on specific work of the internal auditors will depend on the assurance practitioner's assessment of the significance of that work to the assurance practitioner's conclusions, the evaluation of the internal audit function and the evaluation of the specific work of the internal auditors. Such procedures may include:

- (a) Examination of evidence of the operation of the compliance activity already examined by the internal auditors;
- (b) Examination of evidence of the operation of other instances of the same compliance activity;
- (c) Examination of the outcomes of monitoring of controls by internal auditors; and
- (d) Observation of procedures performed by the internal auditors.

~~A41-A43.~~ Irrespective of the degree of autonomy and objectivity of the internal audit function, such a function is not independent of the entity as is required of the assurance practitioner when performing the compliance engagement. The assurance practitioner has sole responsibility for the conclusion expressed in the assurance report, and that responsibility is not reduced by the assurance practitioner's use of the work of the internal auditors.

Evaluation of Evidence and Communication of Non-Compliance

~~A42-A44.~~ In evaluating any non-compliance (corrected or un-corrected) with the compliance requirements the assurance practitioner ~~ordinarily~~ considers materiality as specified in the terms of the engagement where relevant, any relevant legislative, regulatory or other (e.g. contractual) requirements which may apply and the effect on the decisions of the intended users of the assurance report and the assurance practitioner's conclusion. (Ref: Para. 1,49-52 ~~Error! Reference source not found. Error! Reference source not found.~~)

~~A43-A45.~~ For both reasonable and limited assurance engagements, if the assurance practitioner becomes aware of a matter that leads the assurance practitioner to question whether a material non-compliance exists, the assurance practitioner would ordinarily pursue the matter by performing other evidence gathering procedures sufficient to enable the assurance practitioner to form a conclusion. (Ref: Para. 43)

Written Representations (Ref: Para. 53)

~~A44-A46.~~ For application material on using written representations refer to ASAE 3000.³⁶

~~A45-A47.~~ The person(s) from whom the assurance practitioner requests written representations will ordinarily be a member of senior management or those charged with governance. However, because management and governance structures vary by entity, reflecting influences such as different cultural and legal backgrounds, and size and ownership characteristics, it is not possible for this ASAE to specify for all engagements the appropriate person(s) from whom to request written representations. The process to identify the appropriate person(s) from whom to request written representations requires the exercise of professional judgement.

Subsequent Events (Ref: Para 54)

~~A46-A48.~~ Assurance procedures with respect to the identification of subsequent events after period end are limited to examination of relevant reports, for example reports on compliance

³⁶ See ASAE 3000, paragraphs A136-A139.

Proposed Standard on Assurance Engagements ASAE 3100
Compliance Engagements

procedures, minutes of relevant committees and enquiry of management or other personnel as to significant non-compliance with compliance requirements.

- | ~~A47-A49.~~ A49. The assurance practitioner does not have any responsibility to perform procedures or make any enquiry after the date of the report. If however, after the date of the report, the assurance practitioner becomes aware of a matter identified, the assurance practitioner considers re-issuing the report. In an attestation engagement where the report has already been issued, the new report includes an Emphasis of Matter discussing the reason for the new report. In a direct engagement, the new report discusses the reason for the new report under a heading “Subsequent Events”.

Preparing the Assurance Report (Ref: Para. 57-60)

Assurance Report Content

- | ~~A48-A50.~~ A50. The assurance practitioner may expand the report to include other information not intended as a qualification of the assurance practitioner’s conclusion. If the report includes other information it is a long-form report as the information is additional to the basic elements required in paragraph ~~5860~~ for a short-form report. This additional information may be required by regulation or agreed in the terms of the engagement to meet the needs of users. When considering whether to include any such information the assurance practitioner assesses the materiality of that information in the context of the objectives of the engagement. Other information is not to be worded in such a manner that it may be regarded as a qualification of the assurance practitioner’s conclusion and may include for example:
- Relevant background information and historical context.
 - The assurance approach.
 - Underlying facts and criteria applied.
 - Disclosure of materiality levels.
 - Findings relating to particular aspects of the compliance engagement.
 - Analysis of the causes of non-compliance with the compliance requirements.
 - Recommendations for improvements to address identified compliance framework deficiencies.
- | ~~A49-A51.~~ A51. In some circumstances, the form and/or content of the assurance report is prescribed by law or regulation. In such cases, the assurance practitioner compares the prescribed report with the reporting requirements under this ASAE to ensure the minimum basic elements have been met. (Ref: Para. 27)

Summary of the Work Performed (Ref: Para 58(n)~~61(f)~~)

- | ~~A50-A52.~~ A52. The summary of the work performed helps the intended users understand the nature of the assurance conveyed by the assurance report. For many assurance engagements, infinite variations in procedures are possible in theory. It may be appropriate to include in the summary a statement that the work performed included evaluating the suitability of the criteria and the compliance requirements and the risks that threaten those compliance requirements not being met. ASAE 3000 provides application material on reporting on the applicable criteria.
- | ~~A51-A53.~~ A53. In a limited assurance engagement an appreciation of the nature, timing, and extent of procedures performed is essential to understanding the assurance conveyed by the conclusion, therefore the summary of the work performed is ordinarily more detailed than for a reasonable assurance engagement and identifies the limitations on the nature, timing, and extent of procedures. It also may be appropriate to indicate certain procedures that were not performed

Proposed Standard on Assurance Engagements ASAE 3100
Compliance Engagements

that would ordinarily be performed in a reasonable assurance engagement. However, a complete identification of all such procedures may not be possible because the assurance practitioner's required understanding and consideration of engagement risk is less than in a reasonable assurance engagement.

~~A52-A54.~~ Factors to consider in determining the level of detail to be provided in the summary of the work performed include:

- (a) Circumstances specific to the entity (e.g. the maturity of the entity's compliance framework compared to those typical in the industry sector);
- (b) Specific engagement circumstances affecting the nature and extent of the procedures performed; and
- (c) The intended users' expectations of the level of detail to be provided in the report, based on market practice, or applicable law or regulation.

~~A53-A55.~~ It is important that the summary be written in an objective way that allows intended users to understand the work done as the basis for the assurance practitioner's conclusion. In most cases this will not involve relating the entire work plan, but on the other hand it is important for it not to be so summarised as to be ambiguous, nor written in a way that is overstated or embellished.

~~A54-A56.~~ Illustrative examples of assurance practitioner's reports are contained in Appendix 6. *Intended Users and Specific Purpose of the Assurance Report* (Ref: Para. 58(o)~~64(k)~~)

~~A55-A57.~~ If the assurance practitioner's report on compliance has been prepared for a specific purpose and is only relevant to the intended users, this is stated in the assurance practitioner's report. In addition, the assurance practitioner may consider it appropriate to include wording that specifically restricts distribution of the assurance report other than to intended users, its use by others, or its use for other purposes.

Modified Conclusions (Ref: Para. 62-63)

~~A56-A58.~~ Modifications to the assurance report may be made in the following circumstances:

- (a) A qualified conclusion may be issued if the following matters are material but not pervasive:
 - (i) Unsuitable criteria mandated by legislation or regulation [where the assurance practitioner is unable to resign from the engagement](#);
 - (ii) Scope limitation;
 - (iii) Non-compliance with the compliance requirements;
 - (iv) Misstatement in the Statement;
- (b) An adverse conclusion may be issued if the following matters are both material and pervasive:
 - (i) Unsuitable criteria mandated by legislation or regulation [where the assurance practitioner is unable to resign from the engagement](#);
 - (ii) Non-compliance with the compliance requirements;
 - (iii) Systemic deficiency in the compliance framework;
 - (iv) Misstatement in the Statement;

Proposed Standard on Assurance Engagements ASAE 3100
Compliance Engagements

(c) A disclaimer may be issued if there is a limitation of scope which is both material and pervasive.

- | ~~A57-A59.~~ Illustrative examples of elements of modified assurance practitioner's reports are contained in Appendix 7.
- | ~~A58-A60.~~ Even if the assurance practitioner has expressed an adverse conclusion or a disclaimer of conclusion, it may be appropriate to describe in the basis for modification paragraph the reasons for any other matters of which the assurance practitioner is aware that would have required a modification to the conclusion, and the effects thereof.
- | ~~A59-A61.~~ When expressing a disclaimer of conclusion, because of a scope limitation, it is not ordinarily appropriate to identify the procedures that were performed nor include statements describing the characteristics of the assurance practitioner's engagement; to do so might overshadow the disclaimer of conclusion.

Other Communication Responsibilities (Ref: Para. 64-67)

- | ~~A60-A62.~~ Appropriate actions to respond to the circumstances identified in paragraph 658 may include:
- Obtaining legal advice about the consequences of different courses of action.
 - Communicating with those charged with governance of the entity.
 - Communicating with third parties (for example, a regulator) when required to do so.
 - Modifying the assurance practitioner's conclusion, or adding an Other Matter paragraph.
 - Withdrawing from the engagement.
- | ~~A61-A63.~~ Certain matters identified during the course of the engagement may be of such importance that they would be communicated to those charged with governance. Unless stated otherwise in the terms of engagement, less important matters would be reported to a level of management that has the authority to take appropriate action.

Documentation (Ref: Para. 68-69)

- | ~~A62-A64.~~ For application material on preparing and maintaining documentation refer ASAE 3000.³⁷

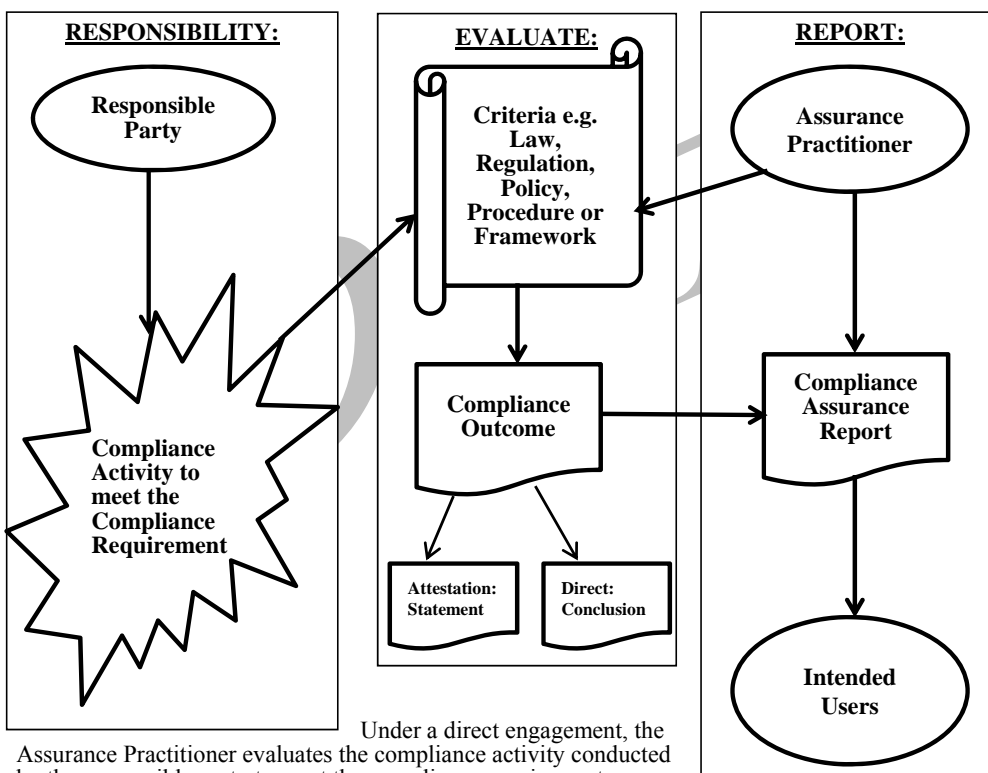
³⁷ See ASAE 3000, paragraphs A193-A200.

Appendix 1

(Ref: Para. A5)

**ROLES AND RESPONSIBILITIES – DIRECT AND ATTESTATION
 COMPLIANCE ENGAGEMENTS**

The diagram below illustrates the relationships in a direct and attestation compliance engagement conducted by an Assurance Practitioner.



Under an attestation engagement, the Responsible Party evaluates the compliance activity against the compliance requirements and provides a statement on the compliance outcome.

In both attestation and direct engagements the Assurance Practitioner evaluates the compliance activity against the compliance requirement(s) using the criteria, and obtains assurance on which to base their assurance conclusion. The compliance assurance report is provided to the intended users.

TERMINOLOGY TABLE - ASAE 3000 AND ASAE 3100

Terminology as applied in ASAEs	ASAE 3000	ASAE 3100
Objective (a)	To obtain either reasonable assurance or limited assurance, as appropriate, about whether the subject matter information is free from material misstatement.....;	To obtain reasonable or limited assurance, about whether the entity has complied in all material respects, with compliance requirements as evaluated by the suitable criteria.
Criteria	The benchmarks used to measure or evaluate the underlying subject matter. The “applicable criteria” are the criteria used for the particular engagement.	The benchmark, framework or legislation used to evaluate whether the compliance requirements have been met. The “applicable criteria” are the criteria used for the particular engagement.
Compliance Requirement(s)	No equivalent term.	The specific requirements established in law, regulations, other statutory requirements (e.g. ASIC Class Orders and Regulatory Guides and APRA Prudential Standards), contractual arrangements, ministerial directives, industry or professional obligations or internally via company policies, procedures and frameworks.
Subject Matter Information vs Compliance Outcome	The outcome of the measurement or evaluation of the underlying subject matter against the criteria, i.e., the information that results from applying the criteria to the underlying subject matter.	The outcome of the evaluation of the compliance activity (underlying subject matter) against the compliance requirements, using the criteria. The compliance outcome is the Statement of the responsible party or evaluator in an attestation compliance engagement, or the assurance practitioner’s conclusion in a direct compliance engagement, providing the outcome of their evaluation.
Underlying Subject Matter vs Compliance Activity	The phenomenon that is measured or evaluated by applying criteria.	The activity that is undertaken to meet the compliance requirement(s)

EXAMPLES: NATURE OF ASSURANCE ENGAGEMENTS ON COMPLIANCE

Scope of the Engagement

Example A summary of the scopes of assurance engagements which may be conducted with respect to compliance is set out in the following table:

Scope of Engagement	Compliance Requirement	Criteria for Evaluating Compliance Activity	Subject Matter / Compliance Activity	Compliance Outcome of the Evaluation (Subject Matter Information)	Assurance Conclusion
Compliance of the Real Estate Trust with the requirements of s407 of the <i>Property Agents and Motor dealers Act 2000</i> (the "Act")	<i>s407 of the Property Agents and Motor Dealers Act 2000</i>	Applicable criteria as specified under s407 of the Act. As an example: maintenance and controls over the Trustee Bank Account.	Trustee Account procedures: Trustee Bank Account and cash book procedures.	Evaluator's Statement or assurance practitioner's conclusion whether the Trust has complied in all material respects with s407 of the Act.	Reasonable Assurance – complied in all material respects with s407 of the Act.
Compliance of the Registered Superannuation Entity (RSE) with the applicable provisions of the <i>Superannuation Industry (Supervision) Act 1993</i> (SIS Act), <i>Superannuation Industry (Supervision) Regulations</i> , <i>FSCODA Reporting Standards</i> , <i>Corporations Act 2001</i> (Corporations Act) and <i>Corporations Regulation 2001</i> (Corporation Regulations)	Applicable sections of: SIS Act; SIS Regulations; Corporations Act; Corporation Regulations; FSCODA Reporting Standards; and Conditions C1, C5 ³⁸ , E1, F1 and G1 imposed under s29EA of the SIS Act.	Example: Conditions imposed under C5 ³⁴ of SIS Act: <ul style="list-style-type: none"> all assets of RSE, including all bank accounts are 'custodially held' as defined in trustee's RSE licence 	As an example: RSE procedures and controls covering: <ul style="list-style-type: none"> bank accounts other assets 	Evaluator's Statement or assurance practitioner's conclusion whether the RSE has complied in all material respects with the requirements of the applicable SIS Act, SIS Regulations, FSCODA Reporting Standards, Corporations Act and Corporations Regulations, conditions imposed under s29EA of the SIS Act.	Reasonable Assurance – complied in all material respects with Condition C5 imposed under s 29EA of the SIS Act.and the applicable provisions of the SIS Act, SIS Regulations, FSCODA Reporting Standards, Corporations Act and Corporations Regulations, other conditions imposed under s29EA of the SIS Act.

³⁸ Condition C5 under s29EA of the SIS Act has been selected as one example of a compliance requirement.

Proposed Standard on Assurance Engagements ASAE 3100
Compliance Engagements

Scope of Engagement	Compliance Requirement	Criteria for Evaluating Compliance Activity	Subject Matter / Compliance Activity	Compliance Outcome of the Evaluation (Subject Matter Information)	Assurance Conclusion
Compliance of a General Insurer or Insurance Group with the requirements of Prudential Standard GPS 220 <i>Risk Management</i> to maintain a Risk Management Strategy (RMS) and Prudential Standard GPS 230 <i>Reinsurance Management</i> to maintain a Reinsurance Management Strategy (REMS)	GPS 220 <i>Risk Management</i> (RMS) and GPS 230 <i>Reinsurance Management</i> (REMS)	Applicable criteria as specified in GPS 220 and GPS 230. Example: GPS 220 <ul style="list-style-type: none"> General Insurer must have a documented Risk Management Strategy (RMS) which includes specified elements 	General Insurers or Insurance Groups maintenance of an RMS and a REMS.	Evaluator’s Statement or assurance practitioner’s conclusion whether the General Insurer or Insurance Group has complied in all material respects with its RMS and REMS.	Limited Assurance – nothing has come to our attention that causes us to believe that [throughout the specified period] the General Insurer or Insurance Group did not comply in all material respects with its RMS and REMS.

Draft

STANDARDS APPLICABLE TO EXAMPLE ENGAGEMENTS ON COMPLIANCE

		APPLICABLE AUASB STANDARDS				
		ASAE 3000 Assurance Engagements (not Historical Financial Info)	ASAE 3100 Assurance Engagements on Compliance (This ASAE)	ASAE 3402 Controls at a Service Organisation	ASAE 3150 Controls Engagements	ASRS 4400 Agreed-upon Procedures
Subject Matter of Compliance Assurance Engagement	1. Entity's compliance with:					
	- Laws and regulation	✓	✓			
	- Contractual obligations	✓	✓			
	- Policies and procedures	✓	✓			
	2. Entity's controls ³⁹ over compliance with requirements ⁴⁰	✓			✓	
	3. Entity's compliance ³⁹ with requirements specifying controls	✓	✓			
	4. Service Organisation's controls:					
	- Relevant to user entities' non-financial reporting, services or functions	✓			✓	
	- Relevant to user entities' financial reporting	✓		✓		
	5. Controls over economy, efficiency or effectiveness	✓			✓	
6. Procedures restricted to those specified by engaging party					✓	

³⁹ The subject matter of the assurance engagement determines which ASAE to apply.

⁴⁰ Where controls not specified in law, regulation or quasi-regulation.

Appendix 5

(Ref: Para. A21)

EXAMPLE ENGAGEMENT LETTERS

Example 1: Engagement Letter for an Attestation Engagement for Limited Assurance on [ABC's Statement of compliance](#) with the [compliance requirements] as evaluated by the [suitable criteria]

Example 2: Engagement Letter for an Attestation Engagement for Reasonable Assurance on [ABC's Statement of compliance](#) with the [compliance requirements] as evaluated by the [suitable criteria]

Example 3: Engagement Letter for a Direct Engagement for Reasonable Assurance on [ABC's compliance](#) with the [compliance requirements] as evaluated by the [suitable criteria]

The following examples of assurance practitioner's engagement letters are for guidance only and are not intended to be exhaustive or applicable to all situations.

Example 1: Engagement Letter for an Attestation Engagement for Limited Assurance on [ABC's Statement of compliance](#) with the [compliance requirements] as evaluated by the [suitable criteria]

To [the appropriate representative of management or those charged with governance of ABC or the engaging party]:

[Objective and scope of the engagement]

You have requested that we undertake a limited assurance engagement on ABC's Statement [which will accompany our report] ~~of regarding~~ compliance with the [compliance requirements], in all material respects, as evaluated by the [suitable criteria], which you will provide and which will accompany our report, [throughout the specified period or as at a specified date] for the purpose of reporting to [identify intended users: the Board of Directors/Regulator/Customers of ABC].

We are pleased to confirm our acceptance and our understanding of this limited assurance engagement by means of this letter. Our assurance engagement will be conducted with the objective of reaching a conclusion on [ABC's Statement ~~regarding~~⁴¹ of compliance with the [compliance requirements], in all material respects, as evaluated by the [suitable criteria] [throughout the specified period or as at a specified date].

[Responsibilities of the assurance practitioner]

We will conduct our assurance engagement in accordance with Standard on Assurance Engagements ASAE 3100 *Compliance Engagements*. That standard requires that we comply with ethical requirements applicable to assurance engagements and plan and perform procedures to obtain limited assurance about whether anything has come to our attention that causes us to believe that [ABC's Statement is ~~materially misstated~~fairly presented] in that the compliance with the [compliance requirements] as evaluated by the [suitable criteria] have not been met~~fair~~, in all material respects.

An assurance engagement involves performing procedures to obtain evidence about the compliance with the [compliance requirements] as measured by the [suitable criteria]. The procedures selected depend on the assurance practitioner's professional judgement, including identifying areas where the risk of material deficiencies in the compliance framework or misstatements in ABC's Statement are likely to arise. We will perform procedures primarily consisting of making enquiries of management and others within the entity, as appropriate, examination of documentation and evaluation of the evidence obtained about compliance with the [compliance requirements] as evaluated by the [suitable

⁴¹ Insert if the assurance report is expressed in terms of the responsible party's or evaluator's Statement rather than the underlying subject matter.

Proposed Standard on Assurance Engagements ASAE 3100
Compliance Engagements

criteria] as provided in ABC's Statement. We will also perform additional procedures if we become aware of matters that cause us to believe there are deficiencies in the compliance framework or misstatements in ABC's Statement. The procedures selected depend on what we consider necessary applying our professional judgement, including the assessment of risks of material deficiencies in the compliance framework or misstatements in ABC's Statement.

Because of the inherent limitations of an assurance engagement, together with the inherent limitations of any system of internal control there is an unavoidable risk that some deficiencies in the compliance framework or misstatements in ABC's Statement may not be detected, even though the engagement is properly planned and performed in accordance with Standards on Assurance Engagements. Therefore no opinion will be expressed as to the effectiveness of the system of internal control as a whole.

The procedures performed in a limited assurance engagement vary in nature and timing from, and are less in extent than for, a reasonable assurance engagement and consequently the level of assurance obtained in a limited assurance engagement is substantially lower than the assurance that would have been obtained had a reasonable assurance engagement been performed. Therefore there is a higher risk than there would be in a reasonable assurance engagement, that any material deficiencies in the compliance framework and relevant controls that exist may not be revealed by the engagement, even though the engagement is properly performed in accordance with ASAE 3100. In expressing our conclusion, our report on ABC's Statement of compliance with the [compliance requirements] as evaluated by the [suitable criteria] will expressly disclaim any reasonable assurance conclusion on the compliance framework and relevant controls.

[Responsibilities of management]

Our assurance engagement will be conducted on the basis that [the responsible party/ management/ those charged with governance] acknowledge and understand that they have responsibility:

- (a) For the preparation of a written Statement [which will be attached to our report] that ABC has complied [throughout the specified period or at a specified date], in all material respects, with the [compliance requirements] as evaluated by the [suitable criteria];
- ~~(a)~~(b) For identification of the [compliance requirements] if not identified by law or regulation.
- ~~(b)~~(c) For the identification of risks that threaten the [compliance requirements] identified above not being met;
- ~~(e)~~(d) For the identification, design and implementation of controls which will mitigate those risks so that those risks will not prevent ~~achievement of~~ the [compliance requirements] being met and to monitor ongoing compliance; and
- ~~(d)~~(e) To provide us with:
 - (i) Access to all information of which those charged with governance and management are aware that is relevant to ABC's Statement of compliance with the [compliance requirements] as evaluated by the [suitable criteria];
 - (ii) Additional information that we may request from those charged with governance and management for the purposes of this assurance engagement; and
 - (iii) Unrestricted access to persons within the entity from whom we determine it necessary to obtain evidence.

As part of our engagement, we will request from [the responsible party/ management/ those charged with governance] written confirmation concerning representations made to us in connection with the engagement.

**Proposed Standard on Assurance Engagements ASAE 3100
Compliance Engagements**

[Assurance Report]

The format of the report will be in accordance with ASAE 3100 with respect to limited assurance engagements [and will be in long-form, including assurance procedures, findings and recommendations]. An example of the proposed report is contained in the appendix to this letter.

[Our report will be issued [frequency] and will cover [throughout the specified period or as at a specified date reported on].⁴²

The limited assurance report will be attached to [ABC's Statement] and our conclusion will be phrased in terms of whether anything has come to our attention that causes us to believe that [ABC's Statement ~~is not fairly presented~~ is materially misstated and compliance with the [compliance requirements] as evaluated by the [suitable criteria] have not been met ~~fairly stated~~, in all material respects [throughout the specified period or as at specified date].

[Use of the Assurance Report]⁴³

[Our report is prepared for the use of ABC and [intended users] for [purpose] and may not be suitable for any other purpose].

The assurance report will be prepared for this purpose only and we disclaim any assumption of responsibility for any reliance on our report to any person other than ABC and [intended users], or for any purpose other than that for which it was prepared.]

We look forward to full cooperation from your staff during our assurance engagement.

[Other relevant information]

[Insert other information, such as fee arrangements, billings and other specific terms, as appropriate.]

Please sign and return the attached copy of this letter to indicate your acknowledgement of, and agreement with, the arrangements for our assurance engagement to report on ABC's Statement of compliance with the [compliance requirements] as evaluated by the [suitable criteria], including our respective responsibilities.

Yours faithfully,

(signed)

.....

Name and Title

Date

Acknowledged on behalf of [engaging party]

(signed)

.....

Name and Title

Date

⁴² Insert this sentence for recurring engagements.

⁴³ Insert this section if the report is to be for restricted use only.

**Proposed Standard on Assurance Engagements ASAE 3100
Compliance Engagements**

Example 2: Engagement Letter for an Attestation Engagement for Reasonable Assurance on ABC's Statement of compliance with the [compliance requirements] as evaluated by the [suitable criteria]

To [the appropriate representative of management or those charged with governance of ABC or the engaging party]:

[Objective and scope of the engagement]

You have requested that we undertake a reasonable assurance engagement on ABC's Statement [which will accompany our report] ~~of regarding the~~ compliance with the [compliance requirements] as evaluated by the [suitable criteria], in all material respects, which you will provide and which will accompany our report, ~~[throughout the specified period or as at a specified~~ [date] for the purpose of reporting to [identify intended users: the Board of Directors/Regulator/Customers of ABC].

We are pleased to confirm our acceptance and our understanding of this reasonable assurance engagement will be conducted with the objective of expressing an opinion on [ABC's Statement ~~regarding~~⁴⁴ being fairly stated compliance with the [compliance requirements], in all material respects, as evaluated by the suitable criteria [throughout the specified period or as at a specified date], ~~in all material respects.~~

[Responsibilities of the assurance practitioner]

We will conduct our assurance engagement in accordance with Standard on Assurance Engagements ASAE 3100 *Compliance Engagements*. That standard requires that we comply with ethical requirements applicable to assurance engagements and plan and perform procedures to obtain reasonable assurance about whether, [ABC's Statement] is fairly stated, ~~in that the compliance with the [compliance requirements] as evaluated by the suitable criteria have been fairly stated~~, in all material respects.

An assurance engagement involves performing procedures to obtain evidence about ABC's Statement of compliance with the [compliance requirements] as measured by the [suitable criteria]. We will perform procedures to obtain evidence about compliance activities and controls implemented to meet the [compliance requirements]. The procedures selected depend on the assurance practitioner's professional judgement, including the identification and assessment of risks of material deficiencies in the compliance framework or misstatements in ABC's Statement.

Because of the inherent limitations of an assurance engagement, together with the inherent limitations of any system of internal control there is an unavoidable risk that some deficiencies in the compliance framework or misstatements in ABC's Statement may not be detected, even though the engagement is properly planned and performed in accordance with Standards on Assurance Engagements. Therefore no opinion will be expressed as to the effectiveness of the system of internal control as a whole.

[Responsibilities of management]

Our assurance engagement will be conducted on the basis that [the responsible party/management/those charged with governance] acknowledge and understand that they have responsibility:

(a) For the preparation of a written Statement [which will be attached to our report] that ABC has complied [throughout the specified period or as at a specified date], in all material respects, with the [compliance requirements] as evaluated by the [suitable criteria].

~~(a)~~(b) Identification of the [compliance requirements] if not identified by law or regulation.

⁴⁴ Insert if the assurance report is expressed in terms of the responsible party's or evaluator's Statement rather than the underlying subject matter.

Proposed Standard on Assurance Engagements ASAE 3100
Compliance Engagements

- ~~(b)~~(c) For the identification of risks that threaten the [compliance requirements] identified above being met;
- ~~(e)~~(d) For the identification, design and implementation of controls which will mitigate those risks so that those risks will not prevent achievement of the [compliance requirements] being met and to monitor ongoing compliance; and
- ~~(d)~~(e) To provide us with:
- (i) Access to all information of which those charged with governance and management are aware that is relevant to ABC's Statement of compliance with the [compliance requirements] as measured by the [suitable criteria];
 - (ii) Additional information that we may request from those charged with governance and management for the purposes of this assurance engagement; and
 - (iii) Unrestricted access to persons within the entity from whom we determine it necessary to obtain evidence.

As part of our engagement, we will request from [the responsible party/ management/ those charged with governance] written confirmation concerning representations made to us in connection with the engagement.

[Assurance Report]

The format of the report will be in accordance with ASAE 3100 with respect to reasonable assurance engagements [and will be in long-form, including assurance procedures, findings and recommendations]. An example of the proposed report is contained in the appendix to this letter.

[Our report will be issued [frequency] and will cover [throughout the specified period or as at a specified date].]⁴⁵

The reasonable assurance report will be attached to [ABC's Statement] and our opinion will be phrased in terms of [ABC's Statement regarding] of compliance being fairly stated with the [compliance requirements] as evaluated by the suitable criteria, in all material respects [throughout the specified period or as at a specified date].

[Use of the Assurance Report]⁴⁶

[Our report is prepared for the use of ABC and [intended users] for [purpose] and may not be suitable for any other purpose].

The assurance report will be prepared for this purpose only and we disclaim any assumption of responsibility for any reliance on our report to any person other than ABC and [intended users], or for any purpose other than that for which it was prepared.]

We look forward to full cooperation from your staff during our assurance engagement.

[Other relevant information]

[Insert other information, such as fee arrangements, billings and other specific terms, as appropriate.]

Please sign and return the attached copy of this letter to indicate your acknowledgement of, and agreement with, the arrangements for our assurance engagement to report on ABC's Statement of

⁴⁵ Insert this sentence for recurring engagements.

⁴⁶ Insert this section if the report is to be for restricted use only.

**Proposed Standard on Assurance Engagements ASAE 3100
Compliance Engagements**

compliance with the [compliance requirements] as evaluated by the [suitable criteria], including our respective responsibilities.

Yours faithfully,

(signed)

.....

Name and Title

Date

Acknowledged on behalf of [ABC/engaging party]

(signed)

.....

Name and Title

Date

Example 3: Engagement Letter for a Direct Engagement for Reasonable Assurance on ABC's compliance with the [compliance requirements] as evaluated by the [suitable criteria]

To [the appropriate addressee]:

[Objective and scope of the engagement]

You have requested that we undertake a reasonable assurance engagement to report on ABC's compliance with the [compliance requirements] as evaluated by the [suitable criteria], in all material respects, [throughout the specified period or as at a specified date] for the purpose of reporting to [identify intended users: the Board of Directors/Regulator/Customers of ABC].

We are pleased to confirm our acceptance and our understanding of this reasonable assurance engagement by means of this letter. Our assurance engagement will be conducted with the objective of expressing an opinion on ABC's compliance with the [compliance requirements], in all material respects, as evaluated by the [suitable criteria] as at [throughout the specified period or as at a specified date], ~~in all material respects~~.

[Responsibilities of the assurance practitioner]

We will conduct our assurance engagement in accordance with Standard on Assurance Engagements ASAE 3100 *Compliance Engagements*. That standard requires that we comply with ethical requirements applicable to assurance engagements and plan and perform procedures to obtain reasonable assurance about whether, ~~in all material respects~~, ABC has complied with the [compliance requirements], in all material respects, as evaluated by the [suitable criteria].

An assurance engagement involves performing procedures to obtain evidence about ABC's compliance with the [compliance requirements] as measured by the [suitable criteria]. We will perform procedures to obtain evidence about compliance activities and controls implemented to meet the [compliance requirements]. The procedures selected depend on the assurance practitioner's professional judgement, including the identification and assessment of risks of material deficiencies in the compliance framework or material non-compliance with the [compliance requirements] as evaluated by the [suitable criteria].

Because of the inherent limitations of an assurance engagement, together with the inherent limitations of any system of internal control there is an unavoidable risk that some deficiencies in the compliance framework or non-compliance by ABC with the [compliance requirements] may not be detected, even

Proposed Standard on Assurance Engagements ASAE 3100
Compliance Engagements

though the engagement is properly planned and performed in accordance with Standards on Assurance Engagements. Therefore no opinion will be expressed as to the effectiveness of the system of internal control as a whole.

[Responsibilities of management]

Our assurance engagement will be conducted on the basis that [the responsible party/management/those charged with governance] acknowledge and understand that they have responsibility:

- (a) For compliance with the [compliance requirements] as evaluated by the [suitable criteria] [throughout the specified period or as at a specified date].
- ~~(a)~~(b) For the identification of risks that threaten the [compliance requirements] identified above being met;
- ~~(b)~~(c) For the identification, design and implementation of controls which will mitigate those risks so that those risks will not prevent achievement of the [compliance requirements] being met and to monitor ongoing compliance; and
- ~~(c)~~(d) To provide us with:
 - (i) Access to all information of which those charged with governance and management are aware that is relevant to ABC's compliance with the [compliance requirements] as measured by the [suitable criteria];
 - (ii) Additional information that we may request from those charged with governance and management for the purposes of this assurance engagement; and
 - (iii) Unrestricted access to persons within the entity from whom we determine it necessary to obtain evidence.

As part of our engagement, we will request from [the responsible party/ management/ those charged with governance] written confirmation concerning representations made to us in connection with the engagement.

[Assurance Report]

The format of the report will be in accordance with ASAE 3100 with respect to reasonable assurance engagements [and will be in long-form, including assurance procedures, findings and recommendations]. An example of the proposed report is contained in the appendix to this letter.

[Use of the Assurance Report]⁴⁷

[Our report is prepared for the use of ABC and [intended users] for [purpose], and may not be suitable for any other purpose].

The assurance report will be prepared for this purpose only and we disclaim any assumption of responsibility for any reliance on our report to any person other than ABC and [intended users], or for any purpose other than that for which it was prepared.]

We look forward to full cooperation from your staff during our assurance engagement.

⁴⁷ Insert this section if the report is to be for restricted use only.

**Proposed Standard on Assurance Engagements ASAE 3100
Compliance Engagements**

[Other relevant information]

[Insert other information, such as fee arrangements, billings and other specific terms, as appropriate.]

Please sign and return the attached copy of this letter to indicate your acknowledgement of, and agreement with, the arrangements for our assurance engagement to report on [ABC's](#) compliance with the [\[compliance requirements\]](#) as evaluated by the [\[suitable criteria\]](#), including our respective responsibilities.

Yours faithfully,

(signed)

.....

Name and Title

Date

Acknowledged on behalf of [engaging party]

(signed).....

Name and Title

Date

Draft

Appendix 6

(Ref: Para. A56)

EXAMPLE ASSURANCE REPORTS ON COMPLIANCE

Example 1: Limited Assurance Report on compliance with the [compliance requirements] as evaluated by the [suitable criteria] ([Direct engagement](#))

Example 2: Reasonable Assurance Report on compliance with the [compliance requirements] as evaluated by the [suitable criteria] ([Direct engagement](#))

[Example 3: Reasonable Assurance Report on ABC's Statement of Compliance with the \[compliance requirements\] as evaluated by the \[suitable criteria\] \(\[Attestation engagement\]\(#\)\)](#)

The following examples of reports are for guidance only and are not intended to be exhaustive or applicable to all situations. They can be applied to both attestation and direct engagements. These examples are short-form reports but may be converted to long-form reports by inclusion of additional information as indicated.

Example 1: Limited Assurance Report on compliance with the [compliance requirements] as evaluated by the suitable criteria ([Direct engagement](#))

Independent Assurance ~~Practitioner's~~ Report

[Appropriate Addressee]

Conclusion

~~Our limited assurance conclusion has been formed on the basis of the matters outlined in this report.~~ We have undertaken a limited assurance engagement on ABC's compliance, in all material respects, with the [compliance requirements] as evaluated by the [suitable criteria], [throughout the specified period or as at a specified date].

Based on the procedures we have performed and the evidence we have obtained, nothing has come to our attention that causes us to believe that ABC, has not complied in all material respects, ~~[ABC's Statement is not fairly stated regarding]~~⁴⁵ compliance with the [compliance requirements] as evaluated by the [suitable criteria] [throughout the specified period or as at a specified date].

[For a long-form report include a separate section, under an appropriate heading, or reference to an attachment for any additional information agreed in the terms of engagement to be provided to users, for example:

- Terms of the engagement.
- Criteria and compliance requirements being used.
- Descriptions of the tests of compliance that were performed.
- Findings relating to the tests of compliance that were performed or particular aspects of the engagement.
- Details of the qualifications and experience of the assurance practitioner and others involved with the engagement.

⁴⁵ Insert for attestation engagements if the conclusion is phrased in terms of ABC's Statement.

**Proposed Standard on Assurance Engagements ASAE 3100
Compliance Engagements**

- Disclosure of materiality levels.
- Recommendations for improvements to the compliance framework or processes around particular compliance activities].

Scope

~~We have undertaken a limited assurance engagement on ABC's compliance, in all material respects, with the [compliance requirements] as evaluated by the suitable criteria, [throughout the specified period or as at a specified date].~~

ABC's Responsibilities

ABC is responsible for:

- ~~(a) — The compliance activity undertaken to meet the [compliance requirements]. Compliance with the [compliance requirements] as evaluated by the suitable criteria [throughout the specified period or as at a specified date].~~
- (a) Identification of risks that threaten the [compliance requirements] identified above being met; and
- (b) Identification, design and implementation of controls which will mitigate those risks so that those risks will not prevent the [compliance requirements] being met and to monitor ongoing compliance.

Our Independence and Quality Control

We have complied with the independence and other relevant ethical requirements relating to assurance engagements, ~~and apply which include independence and other requirements founded on fundamental principles of integrity, objectivity, professional competence and due care, confidentiality and professional behaviour.~~

~~In accordance with Auditing Standard ASQC 1 *Quality Control for Firms that Perform Audits and Reviews of Financial Reports and Other Financial Information, and Other Assurance Engagements* in undertaking this assurance engagement, [name of firm] maintains a comprehensive system of quality control including documented policies and procedures regarding compliance with ethical requirements, professional standards and applicable legal and regulatory requirements.~~

Assurance Practitioner's Responsibilities

Our responsibility is to express a limited assurance conclusion on ~~[ABC's Statement regarding]¹⁴⁹~~ compliance with the [compliance requirements] as evaluated by the [suitable criteria], in all material respects, [throughout the specified period or as at a specified date]. We conducted our engagement in accordance with Standard on Assurance Engagements ASAE 3100 *Compliance Engagements* issued by the Auditing and Assurance Standards Board. That standard requires that we comply with relevant ethical requirements and plan and perform our procedures to obtain limited assurance about whether anything has come to our attention that, ~~in all material respects,~~ ABC has not complied with the [compliance requirements], in all material respects, as evaluated by the [suitable criteria], [throughout the specified period or as at a specified date].

In a limited assurance engagement, the assurance practitioner performs procedures, primarily consisting of making enquiries of management and others within the entity, as appropriate, and examination of documentation, and evaluates the evidence obtained. The procedures selected depend on our judgement, including identifying areas where the risk of ~~material deficiencies in the~~

¹⁴⁹ — Insert for attestation engagements if the conclusion is phrased in terms of the Statement.

Proposed Standard on Assurance Engagements ASAE 3100
Compliance Engagements

~~compliance framework or misstatements in [ABC's Statement]~~⁵⁰ or non-compliance with the [compliance requirements] ~~is~~ are likely to arise.

*[Insert an informative summary of the nature, timing and extent of procedures performed that, in the assurance practitioner's judgement, provides additional information that may be relevant to the users' understanding of the basis for the assurance practitioner's conclusion. The following section has been provided as guidance, and the example procedures are not an exhaustive list of either the type, or extent, of the procedures which may be important for the users' understanding of the work performed].*⁵¹

Given the circumstances of the engagement, in performing the procedures listed above we:

- Through enquiries and observation, obtained an understanding of ABC's compliance framework and internal control environment to meet the [compliance requirements], as evaluated by the [suitable criteria].
- Through enquiries ~~and~~ inspection and walk-throughs, obtained an understanding of relevant [compliance activities] that are undertaken to meet the [compliance requirements], as evaluated by the [suitable criteria].

The procedures performed in a limited assurance engagement vary in nature and timing from, and are less in extent than for, a reasonable assurance engagement and consequently the level of assurance obtained in a limited assurance engagement is substantially lower than the assurance that would have been obtained had a reasonable assurance engagement been performed. Accordingly, we do not express a reasonable assurance opinion on ~~the compliance~~ with the [compliance requirements] framework and relevant controls.

We believe that the evidence we have obtained is sufficient and appropriate to provide a basis for our conclusion.

Inherent Limitations

Because of the inherent limitations of an assurance engagement, together with the internal control structure it is possible that fraud, error, or non-compliance with laws and regulations may occur and not be detected.

A limited assurance engagement on ~~ABC's~~ the compliance with the [compliance requirements] as evaluated by the [suitable criteria], in all material respects, at a specified date⁵² does not provide assurance on whether compliance with the [compliance requirements] will continue in the future.

*[Restricted Use]*⁵³

[This report has been prepared for use by [intended users] for the purpose of [explain purpose]. We disclaim any assumption of responsibility for any reliance on this report to any person other than [intended users], or for any other purpose other than that for which it was prepared.]

*[Assurance practitioner's signature]*⁵⁴

[Date of the assurance practitioner's assurance report]

*[Assurance practitioner's locationaddress]*⁵⁵

⁵⁰ ~~Insert for attestation engagements if the conclusion is phrased in terms of the Statement.~~

⁵¹ The procedures are to be summarised but not to the extent that they are ambiguous, nor described in a way that is overstated or embellished or that implies that reasonable assurance has been obtained. It is important that the description of the procedures does not give the impression that an agreed-upon procedures engagement has been undertaken, and in most cases will not detail the entire work plan.

⁵² Insert only for compliance engagements performed at a date in time.

⁵³ Insert section if the report is restricted use.

⁵⁴ The assurance practitioner's report needs to be signed in one or more of the following ways: name of the assurance practitioner's firm, name of the assurance practitioner's company or the personal name of the assurance practitioner as appropriate.

⁵⁵ The assurance practitioner's address includes the location in the jurisdiction where the assurance practitioner practices.

Proposed Standard on Assurance Engagements ASAE 3100
Compliance Engagements

Example 2: Reasonable Assurance Report on compliance with the [compliance requirements] as evaluated by the [suitable criteria] (Direct engagement)

Independent Assurance Practitioner's Report

[Appropriate Addressee]

Opinion

~~Our opinion has been formed on the basis of the matters outlined in this report.~~

We have undertaken a reasonable assurance engagement on ABC's compliance, in all material respects, with the [compliance requirements] as evaluated by the [suitable criteria], [throughout the specified period or as at a specified date].

In our opinion, ~~in all material respects~~ [ABC's has ~~Statement is fairly stated regarding~~⁵⁶ ~~complied in all material respects~~ with the [compliance requirements] as evaluated by the [suitable criteria] [throughout the specified period or as at a specified date].

[For a long-form report, include a separate section, under an appropriate heading, or reference to an attachment for any additional information agreed in the terms of engagement to be provided to users, for example:

- Terms of the engagement.
- Criteria and compliance requirements being used.
- Descriptions of the tests of compliance that were performed.
- Findings relating to the tests of compliance that were performed or particular aspects of the engagement.
- Details of the qualifications and experience of the assurance practitioner and others involved with the engagement.
- Disclosure of materiality levels.
- Recommendations for improvements to the compliance framework or processes around particular compliance activities].

Scope

~~We have undertaken a reasonable assurance engagement on ABC's compliance, in all material respects, with the [compliance requirements] as evaluated by the suitable criteria, [throughout the specified period or as at a specified date].~~

ABC's Responsibilities

ABC is responsible for:

- (a) ~~The compliance activity undertaken to meet the [compliance requirements] [Compliance with the [compliance requirements] as evaluated by the suitable criteria [throughout the specified period or as at a specified date].~~
- (a) ~~Identification of risks that threaten the [compliance requirements] identified above not being met; and~~

⁵⁶ Insert for attestation engagements if the opinion is phrased in terms of ABC's Statement.

Proposed Standard on Assurance Engagements ASAE 3100
Compliance Engagements

- (b) Identification, design and implementation of controls which will mitigate those risks so that those risks will not prevent the [compliance requirements] being met and to monitor ongoing compliance.

Our Independence and Quality Control

We have complied with the independence and other relevant ethical requirements relating to assurance engagements, and apply which include independence and other requirements founded on fundamental principles of integrity, objectivity, professional competence and due care, confidentiality and professional behaviour. ~~In accordance with~~ Auditing Standard ASQC 1 *Quality Control for Firms that Perform Audits and Reviews of Financial Reports and Other Financial Information, and Other Assurance Engagements in undertaking this assurance engagement*.
Assurance Practitioner's Responsibilities

Our responsibility is to express an opinion, in all material respects on ~~ABC's Statement regarding~~⁵⁷ compliance with the [compliance requirements] as evaluated by the [suitable criteria] [throughout the specified period or as at a specified date]. We conducted our engagement in accordance with Standard on Assurance Engagements ASAE 3100 *Compliance Engagements* issued by the Auditing and Assurance Standards Board. That standard requires that we comply with relevant ethical requirements and plan and perform our procedures to obtain reasonable assurance about whether, in all material respects, ABC has complied with the [compliance requirements] as evaluated by the [suitable criteria], [throughout the specified period or as at a specified date].

An assurance engagement to report on ~~ABC's~~^{the} compliance with the [compliance requirements] involves performing procedures to obtain evidence about the compliance activity and controls implemented to meet the [compliance requirements]. The procedures selected depend on our judgement, including the identification and assessment of risks of material ~~deficiencies in the compliance framework, misstatements in ABC's Statement~~⁵⁷ or material non-compliance with the [compliance requirements], as evaluated by the [suitable criteria].

We believe that the evidence we have obtained is sufficient and appropriate to provide a basis for our opinion.

Inherent Limitations

Because of the inherent limitations of an assurance engagement, together with the internal control structure it is possible that fraud, error, or non-compliance with laws and regulations may occur and not be detected.

A reasonable assurance engagement on ~~ABC's~~^{the} compliance with the [compliance requirements] as evaluated by the [suitable criteria], in all material respects, at a specified date⁵⁸ does not provide assurance on whether compliance with the [compliance requirements] will continue in the future.

*[Restricted Use]*⁵⁹

[This report has been prepared for use by [intended users] for the purpose of [explain purpose]. We disclaim any assumption of responsibility for any reliance on this report to any person other than [intended users], or for any other purpose other than that for which it was prepared.]

⁵⁷ Insert for attestation engagements if the opinion is phrased in terms of the Statement.

⁵⁸ Insert only for compliance engagements performed at a date in time.

⁵⁹ Insert section if the report is restricted use.

Proposed Standard on Assurance Engagements ASAE 3100
Compliance Engagements

| [Assurance practitioner's signature]⁶⁰

| [Date of the assurance practitioner's assurance report]

| [Assurance practitioner's locationaddress]⁶¹

Draft

⁶⁰ The assurance practitioner's report needs to be signed in one or more of the following ways: name of the assurance practitioner's firm, name of the assurance practitioner's company or the personal name of the assurance practitioner as appropriate.

⁶¹ The assurance practitioner's address includes the location in the jurisdiction where the assurance practitioner practices.

Example 32: Reasonable Assurance Report on ABC's Statement of Compliance with the [compliance requirements] as evaluated by the [suitable criteria] (Attestation engagement)

Independent Assurance ~~Practitioner's~~ Report

[Appropriate Addressee]

Opinion

We have undertaken a reasonable assurance engagement on ABC's Statement of compliance with the [compliance requirements], in all material respects, as evaluated by the [suitable criteria], [throughout the specified period or as at a specified date]. This Statement will accompany our report, for the purpose of reporting to [identify intended users].

In our opinion, ABC's Statement ~~is fairly stated of compliance is prepared,~~ in all material respects, ~~with regard to the [compliance requirements] as evaluated by the suitable criteria~~ [throughout the specified period or as at a specified date].

[For a long-form report, include a separate section, under an appropriate heading, or reference to an attachment for any additional information agreed in the terms of engagement to be provided to users, for example:

- Terms of the engagement.
- Criteria and compliance requirements being used.
- Descriptions of the tests of compliance that were performed.
- Findings relating to the tests of compliance that were performed or particular aspects of the engagement.
- Details of the qualifications and experience of the assurance practitioner and others involved with the engagement.
- Disclosure of materiality levels.
- Recommendations for improvements to the compliance framework or processes around particular compliance activities].

ABC's Responsibilities

ABC is responsible for:

- (a) Providing a Statement with respect to the outcome of the evaluation of the compliance activity against the [compliance requirements].
- ~~(b) Compliance with the [compliance requirements] as evaluated by the suitable criteria [throughout the specified period or as at a specified date].~~
(b) Identification of the [compliance requirements] if not identified by law and regulation.
- ~~(b) The compliance activity undertaken to meet the [compliance requirements].~~
- (c) Identification of risks that threaten the [compliance requirements] identified above not being met; and
- (d) Identification, design and implementation of controls which will mitigate those risks so that those risks will not prevent the [compliance requirements] being met and to monitor ongoing compliance.

Our Independence and Quality Control

We have complied with the independence and other relevant ethical requirements relating to assurance engagements, and apply which include independence and other requirements founded on fundamental principles of integrity, objectivity, professional competence and due care, confidentiality and professional behaviour.
In accordance with Auditing Standard ASQC 1 *Quality Control for Firms that Perform Audits and Reviews of Financial Reports and Other Financial Information, and Other Assurance Engagements in undertaking this assurance engagement.
*Assurance Practitioner's Responsibilities**

Our responsibility is to express an opinion, on ABC's Statement of compliance with the [compliance requirements], in all material respects as evaluated by the [suitable criteria] [throughout the specified period or as at a specified date]. We conducted our engagement in accordance with Standard on Assurance Engagements ASAE 3100 *Compliance Engagements* issued by the Auditing and Assurance Standards Board. That standard requires that we comply with relevant ethical requirements and plan and perform our procedures to obtain reasonable assurance about whether, ABC's Statement of compliance with the [compliance requirements], is fairly stated, in all material respects, as evaluated by the suitable criteria, [throughout the specified period or as at a specified date] is materially stated.

An assurance engagement to report on ABC's Statement of compliance with the [compliance requirements] involves performing procedures to obtain evidence about the compliance activity and controls implemented to meet the [compliance requirements]. The procedures selected depend on our judgement, including the identification and assessment of risks of material deficiencies in the compliance framework, misstatements in ABC's Statement or material non-compliance with the [compliance requirements], as evaluated by the suitable criteria are likely to arise.

We believe that the evidence we have obtained is sufficient and appropriate to provide a basis for our opinion.

Inherent Limitations

Because of the inherent limitations of an assurance engagement, together with the internal control structure it is possible that fraud, error, or non-compliance with laws and regulations may occur and not be detected.

A reasonable assurance engagement on ABC's Statement of compliance with the [compliance requirements] as evaluated by the [suitable criteria], in all material respects, at a [specified date]⁶² does not provide assurance on whether compliance with the [compliance requirements] will continue in the future.

[Restricted Use]⁶³

[This report has been prepared for use by [intended users] for the purpose of [explain purpose]. We disclaim any assumption of responsibility for any reliance on this report to any person other than [intended users], or for any other purpose other than that for which it was prepared.]

[Assurance practitioner's signature]⁶⁴

[Date of the assurance practitioner's assurance report]

[Assurance practitioner's locationaddress]⁶⁵

⁶² Insert only for compliance engagements performed at a date in time.

⁶³ Insert section if the report is restricted use.

⁶⁴ The assurance practitioner's report needs to be signed in one or more of the following ways: name of the assurance practitioner's firm, name of the assurance practitioner's company or the personal name of the assurance practitioner as appropriate.

⁶⁵ The assurance practitioner's address includes the location in the jurisdiction where the assurance practitioner practices.

Appendix 7

(Ref: Para. A59)

EXAMPLE MODIFIED ASSURANCE REPORTS ON COMPLIANCE

- Example 1: Qualified reasonable assurance opinion – ABC’s Statement ~~of on the~~ compliance with the [compliance requirements] is materially misstated (Attestation engagement)~~not fairly stated in all material respects~~
- Example 2: Adverse reasonable assurance opinion – the [compliance requirements] were non-compliant throughout the specified period (Direct engagement)
- Example 3: Disclaimer of reasonable assurance opinion – the assurance practitioner is unable to obtain sufficient appropriate evidence of compliance with the [compliance requirements] (Direct engagement)
- Example 4: Qualified limited assurance conclusion – the assurance practitioner is unable to obtain sufficient appropriate evidence of compliance with the [compliance requirements] (Direct engagement)

The following examples of modified reasonable and limited assurance reports are for guidance only and are not intended to be exhaustive or applicable to all situations. They are based on the example reports in Appendix 65 and may be adapted as appropriate to the engagement circumstances.

Example 1: Qualified reasonable assurance opinion – ABC’s Statement on the compliance with the [compliance requirements] is materially misstated (Attestation engagement) ~~not fairly stated in all material respects~~

...

Qualified Opinion

~~Our opinion has been formed on the basis of the matters outlined in this report. The criteria we used in forming our opinion were the compliance requirements identified in ABC’s Statement.~~

In our opinion, ~~in all material respects~~, except for the matter(s) described in the Basis for Qualified Opinion paragraph, the Statement by ABC is fairly stated, in all material respects, fairly stated [as at [date]/ throughout the specified period from [date] to [date]].

...

Basis for Qualified Opinion

~~We identified a material matter in ABC’s Statement in relation to [non-compliance with sXX of Act/Regulation XX]. This has the effect of the [Trustee bank account and cash book procedures not being completed throughout the specified period] as required. We were unable to satisfy ourselves by alternate procedures, therefore qualify our opinion in this regard.~~

~~The accompanying Statement⁶⁶ that ABC is compliant, in all material respects with the [list specific compliance requirements], as evaluated by the suitable criteria. Based on our procedures, which included enquiries of staff personnel and observation of compliance activities, we have determined that compliance with the [list specific compliance requirements], in all material respects, was not fairly stated in ABC’s Statement due to [reason].~~

...

⁶⁶ Insert for attestation engagements if the opinion is phrased in terms of the Statement.

Assurance Practitioner's Responsibilities

We believe that the evidence we have obtained is sufficient and appropriate to provide a basis for our qualified opinion.

Example 2: Adverse reasonable assurance opinion – the compliance requirements were non-compliant throughout the specified period (Direct engagement)

...

Adverse Opinion

~~Our opinion has been formed on the basis of the matters outlined in this report. The criteria we used in forming our opinion were the compliance requirements as described above in this report. In our opinion, ABC has not complied, in all material respects, with the [compliance requirements], as evaluated by the [suitable criteria], in all material respects, throughout the specified period from [date] to [date].~~

...

Basis for Adverse Opinion

~~We have identified a material matter in relation to [sXX of Act/Regulation XX that the procedures and controls regarding RSE bank accounts and other assets were not completed and effective throughout the specified period [date] to [date]. This has the effect of the RSE not meeting the [conditions imposed under sXX of Act/Regulation XX] and being non-compliant in this regard.~~

~~The compliance activity undertaken by ABC has not complied with the [compliance requirements] as evaluated by the suitable criteria, in all material respects, throughout the specified period from [date] to [date] due to [reason]. This resulted in insufficient assurance that ABC had complied with the [compliance requirements], in all material respects, throughout the specified period from [date] to [date].~~

...

Assurance Practitioner's Responsibilities

We believe that the evidence we have obtained is sufficient and appropriate to provide a basis for our adverse opinion.

...

Example 3: Disclaimer of reasonable assurance opinion – the assurance practitioner is unable to obtain sufficient appropriate evidence of compliance with the [compliance requirements] (Direct engagement)

...

Disclaimer of Opinion on Compliance with the Compliance Requirements

Because of the significance of the matter described in the Basis for Disclaimer of Opinion section of our report, we have not been able to obtain sufficient appropriate evidence to provide the basis for an opinion on ~~ABC's~~ the compliance with [~~list specific~~ compliance requirements], as evaluated by the [suitable criteria] throughout the specified period.

...

Basis for Disclaimer of Opinion

ABC's computer systems were subject to a cyber-attack on [date] in which a substantial amount of ABC's data was destroyed and no back up data retrievable, throughout the ~~specified~~ period from [date]

to [date]. Due to this event we were unable to conduct testing of compliance activities or walk-throughs relevant to ~~[list specific compliance requirements]~~ throughout the specified period, which would be necessary to form an opinion on whether ABC was compliant with ~~[list specific compliance requirements]~~ throughout the ~~specified~~ period.

...

Assurance Practitioner's Responsibilities

Because of the matters described in the Basis for Disclaimer of Opinion paragraph, ~~however,~~ we are not able to obtain sufficient appropriate evidence to provide a basis for a reasonable assurance opinion on ABC's compliance with the ~~[list specific compliance requirements]~~, as evaluated by the [suitable criteria].

...

Example 4: Qualified limited assurance conclusion – the assurance practitioner is unable to obtain sufficient appropriate evidence of compliance with the [compliance requirements] (Direct engagement)

...

Qualified Conclusion

~~Our conclusion has been formed on the basis of the matters outlined in this report. The criteria we used in forming our conclusion were the compliance requirements as described above in this report.~~ Based on the procedures we have performed and the evidence we have obtained, except for the matter described in the Basis for Qualified Conclusion paragraph, nothing has come to our attention that causes us to believe that, ABC has not complied, in all material respects, with the [compliance requirements] as evaluated by the [suitable criteria], ~~in all material respects,~~ throughout the specified period from [date] to [date].

...

Basis for Qualified Conclusion

Insufficient records were available from [date] to [date] due to [reason], and we were therefore unable to perform procedures on the [compliance activity] undertaken to meet the [specific compliance requirement] evaluate ABC's compliance, in all material respects with [list specific compliance requirements] as evaluated by the suitable criteria, throughout the specified period ~~from [date] to [date]. This has the effect of [restricting our ability to document, observe and walk through procedures undertaken as part of the compliance activity] which are necessary to form a conclusion on ABC's compliance with the [specific compliance requirements].~~

...

Assurance Practitioner's Responsibilities

We believe that the evidence we have obtained is sufficient and appropriate to provide a basis for our qualified conclusion.